

info@bottpower.com / (+34) 649 307 865



www.bottpower.com

XR1

XR1

The BOTT XR1 is a sportbike with flattrack aesthetics built around a Buell XB12 donor bike.

The bike weights 179 kgs (20 kgs less than a Buell XB12 SS) and has 100 HP with lots of torque. Apart of the top fuel tank, it has a secondary fuel tank under the rear shock absorber, which allows a total fuel capacity of 11 liters (not bad!)







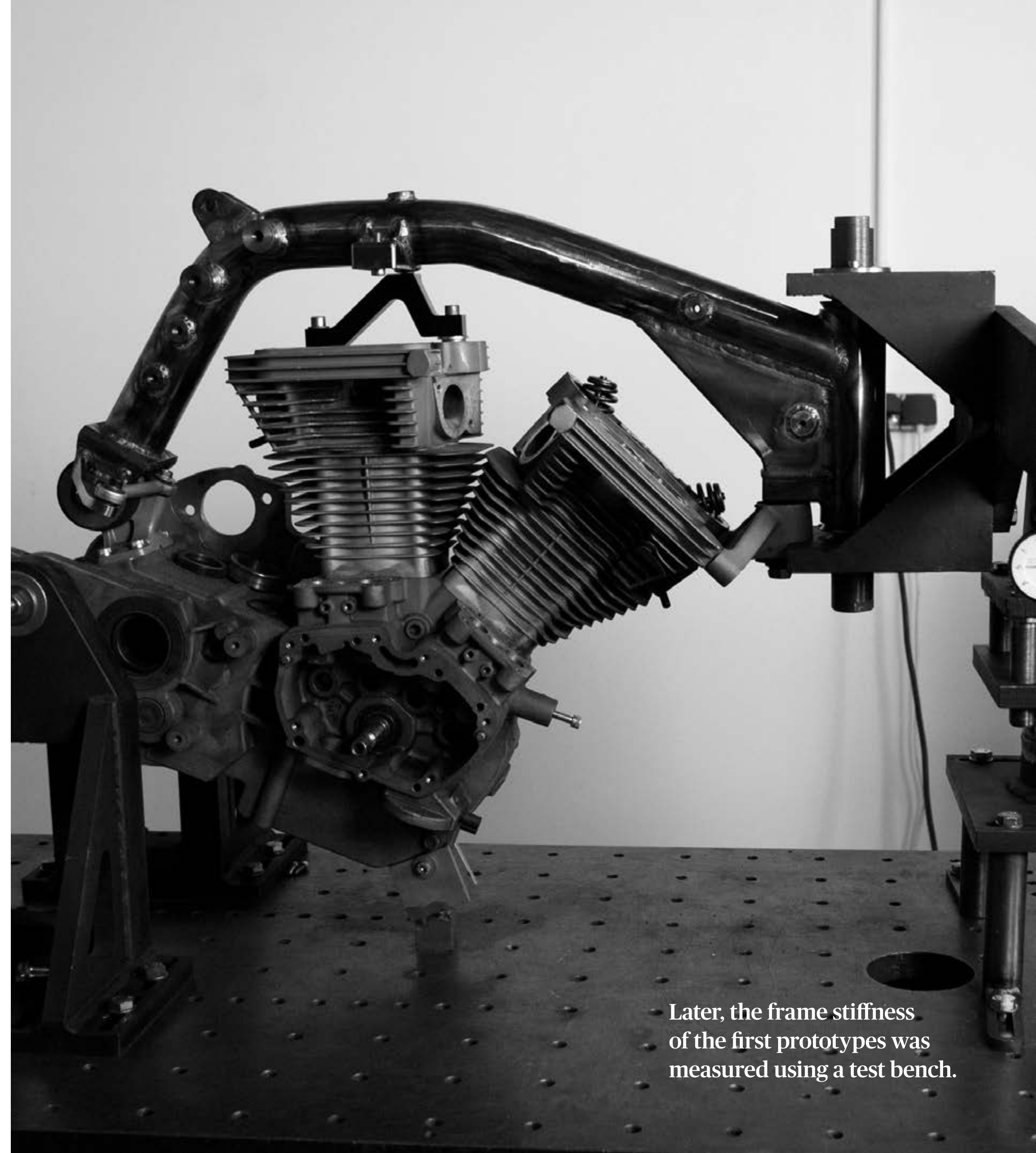
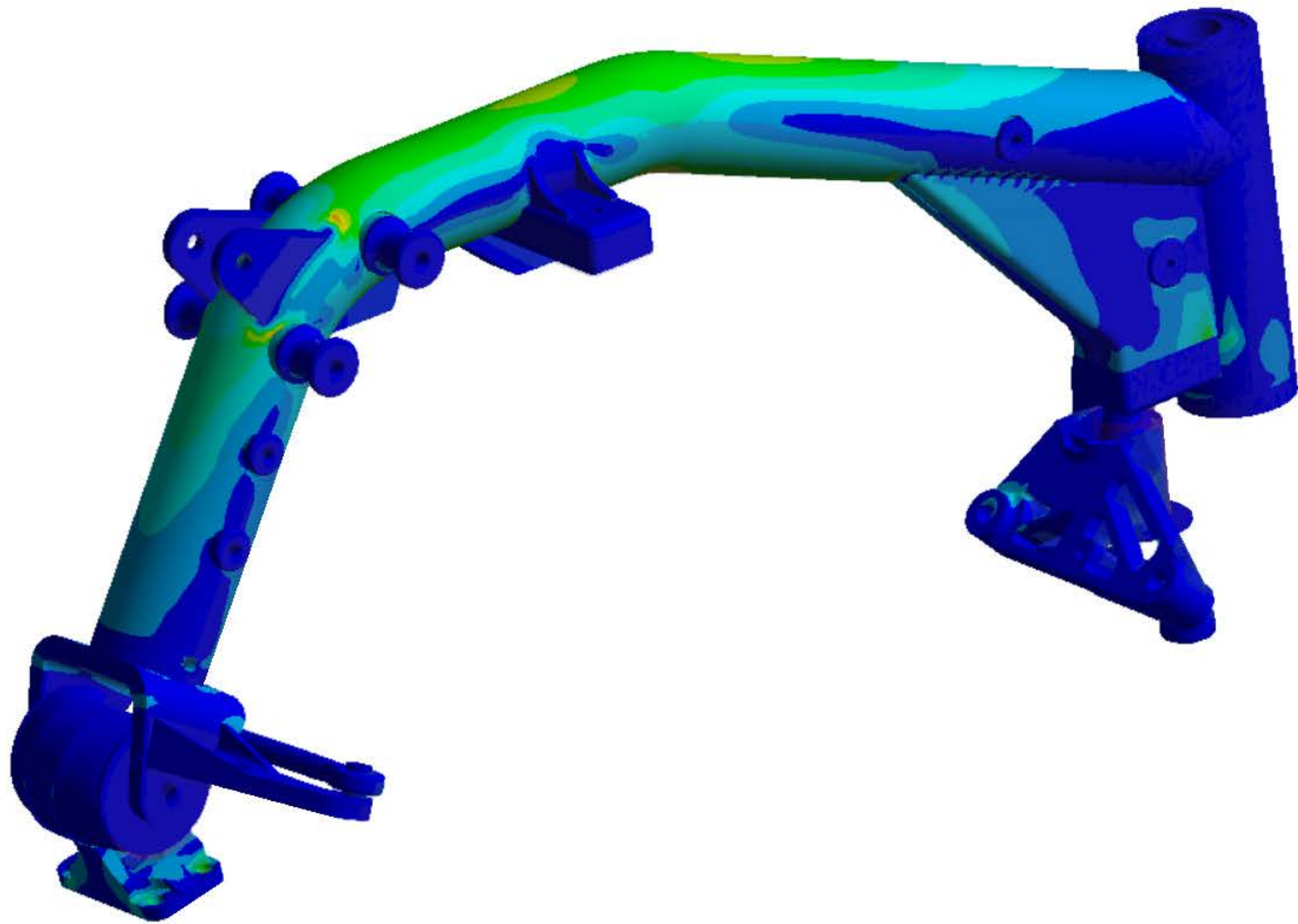


XR1

FRAME DESIGN & DEVELOPMENT

The BOTT XR1 frame has been designed applying all the knowledge and experience that BOTTPOWER has in the racing world.

The frame stiffness was extensively studied using FEA (Finite Element Analysis).



Later, the frame stiffness of the first prototypes was measured using a test bench.

As Bottpower does with all their motorbikes, the development work continued at the track with several tests performed by professional riders.



ANTONY WEST (ex MotoGP rider) testing the BOTT XR1 at Valencia track.

ALEX MARTINEZ (ex WSBK rider) testing the BOTT XR1 at Albaida track



In 2017, the BOTT XR1R, equipped with the same frame that we are using on our street bikes, raced in Pikes Peak, finishing 4th overall and winning on its class.



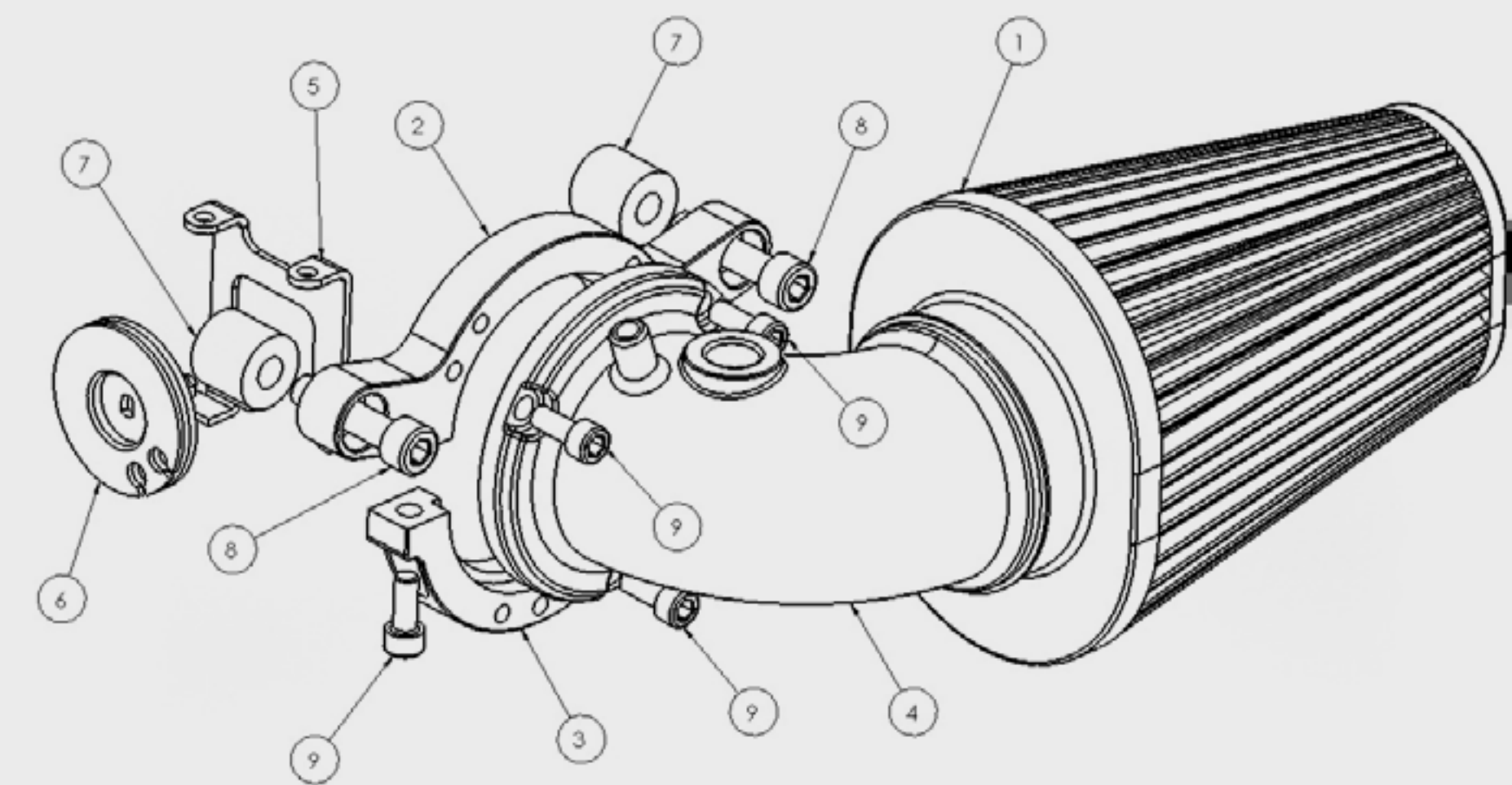




XR1

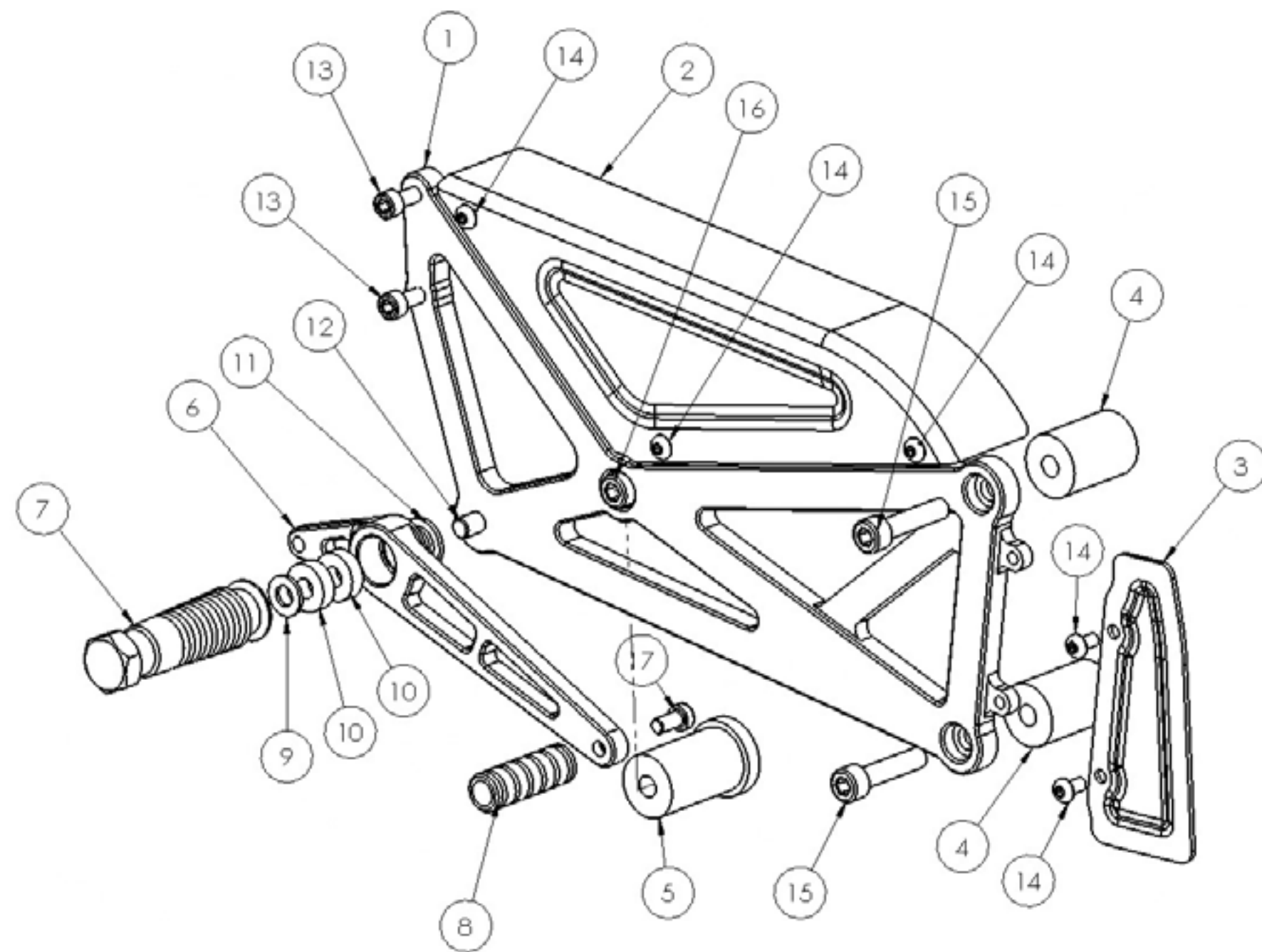
THE KIT

Part number:	Description:
A10507-01	AIR INTAKE ASSEMBLY



Item	Part No.	Description	Qty.	Remaks
1	C10043	Air filter	1	K&N RC-3680
2	29.1.1060-01	Top bracket air intake	1	
3	29.1.1061-01	Lower bracket air intake	1	
4	29.1.1057-01	Curved intake	1	
5	29.1.1068-01	Throttle cable plate	1	
6	29.1.1069-01	Butterfly intake cam	1	
7	29.1.1062-01	Air intake spacer	2	
8	TCCM8-40	M8 bolt	2	
9	TCCM6-20	M6 bolt	5	

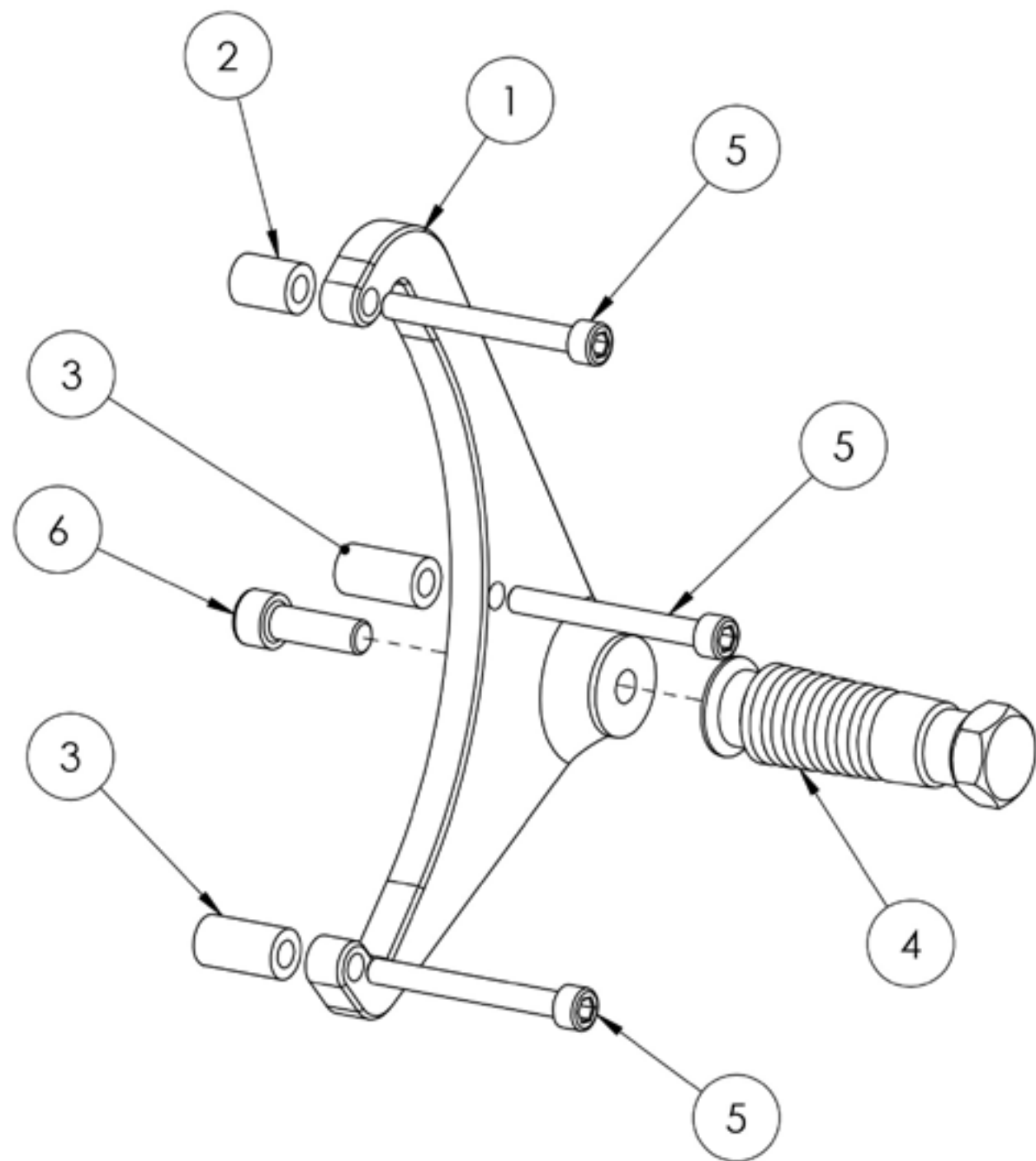
Part number:	Description:
A10506-01	RIGHT FOOTPEG ASSEMBLY



Item	Part No.	Description	Qty.	Remaks
1	29.1.1021-01	Right footpeg plate	1	Aluminium, anodized
2	29.1.1048-01	Belt cover	1	Carbon fiber
3	29.1.1063-01	Connectors cover	1	Carbon fiber
4	29.1.1046-01	Front spacer	2	Aluminium, anodized
5	29.1.1047-01	Rear spacer	1	Aluminium, anodized
6	29.1.1049-01	Rear brake lever	1	Aluminium, anodized
7	29.1.1087-01	Footpeg	1	Aluminium, anodized
8	29.1.1088-01	Rear brake lever end	1	Aluminium, anodized
9	TA8N	Washer	1	
10	C10044	Bearing	2	
11	29.1.1050-01	Spacer	1	
12	TCCM8-25	Screw	1	
13	TCCM6-25	Screw	2	
14	TCAM5-15	Screw	5	
15	TCCM8-50	Screw	2	
16	TCCM8-80	Screw	1	
17	TCCBM6-20	Screw	1	

Part number:
A10505-01

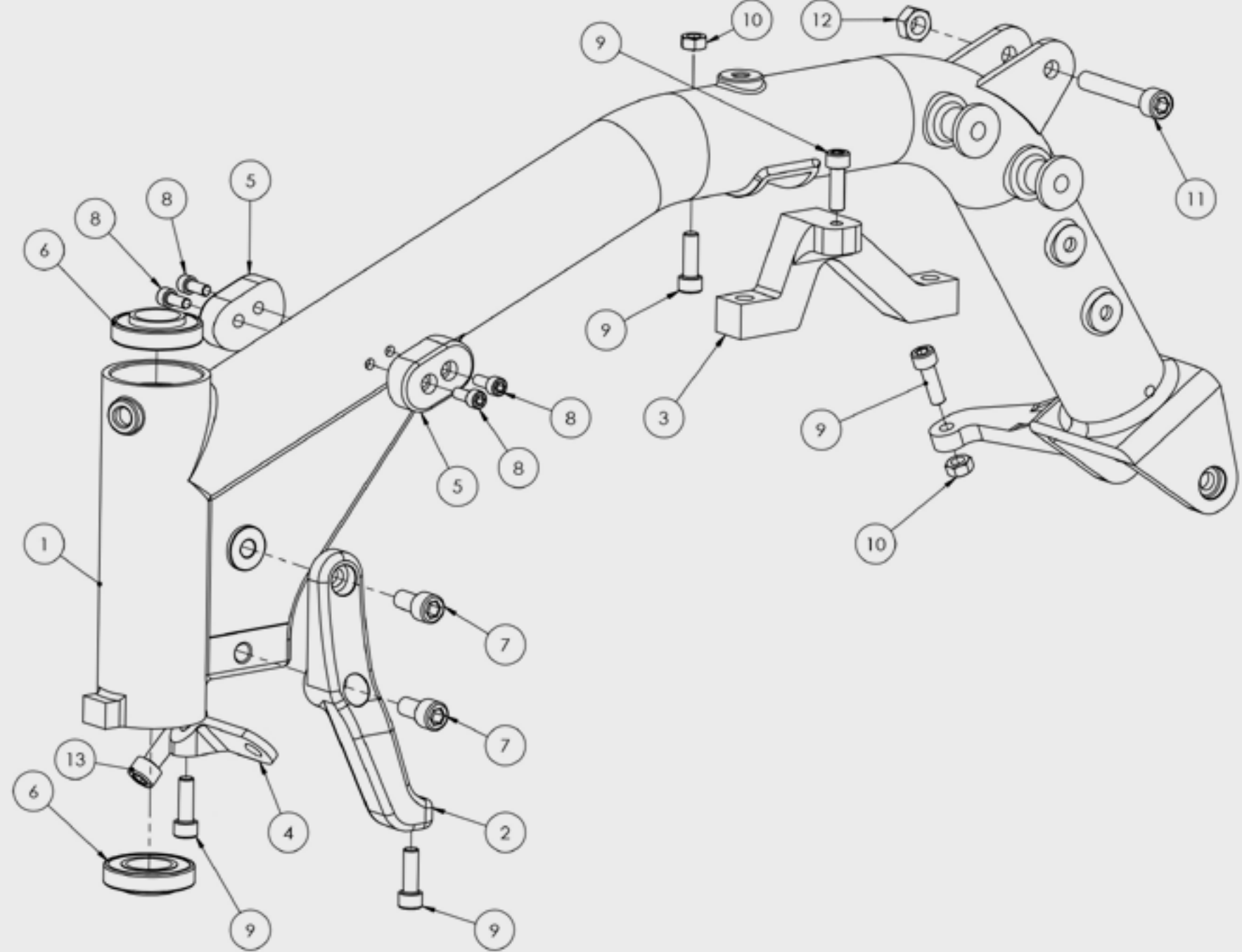
Description:
LEFT FOOTPEG ASSEMBLY



Item	Part No.	Description	Qty.	Remaks
1	29.1.1043-01	Left footpeg plate	1	Aluminium, anodized
2	29.1.1074-04	Left footpeg spacer	2	16 mm, Aluminium, anodized
3	29.1.1074-05	Left footpeg spacer	1	22 mm, Aluminium, anodized
4	29.1.1087-01	Footpeg	1	Aluminium, anodized
5	TCCW0.25-3.25	Bolt	3	
6	TCCM8-25	Bolt	1	

Part number:
A10501-01

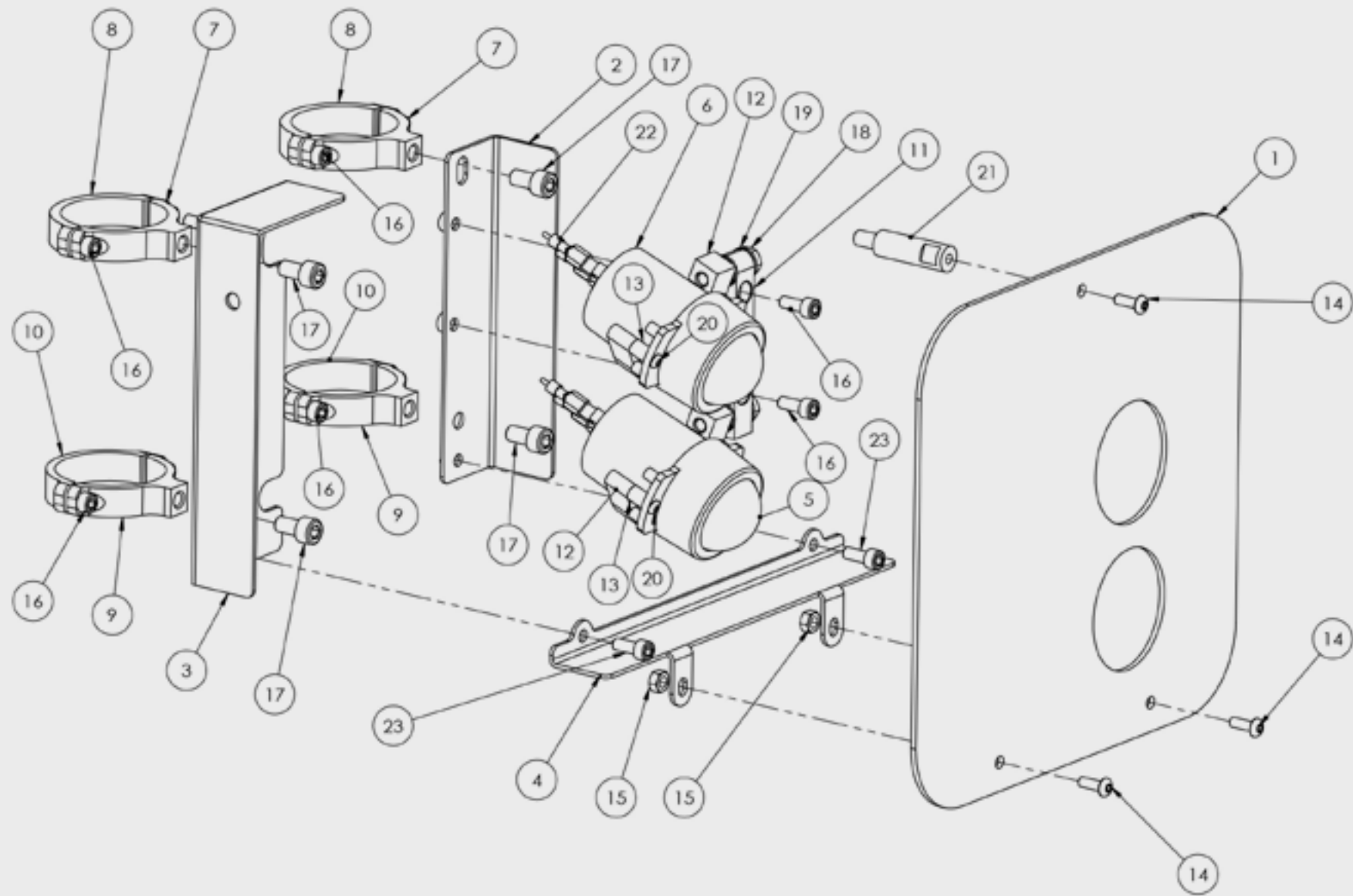
Description:
FRAME ASSEMBLY



Item	Part No.	Description	Qty.	Remaks
1	29.1.1000-01	Frame	1	Steel, powder coated
2	29.1.1131-01	Front tie rod holder	1	Aluminium, anodized
3	29.1.1006-01	Rear head clamping	1	Aluminium, anodized
4	29.1.1146-01	Engine front clamp adaptor	1	Steel
5	29.1.1182-01	Top tank front mounting rubber	2	Rubber
6	C10046	Bearing	2	
7	TCCM10-20	Bolt	2	
8	TCCM6-15	Bolt	4	
9	TCCM8-25	Bolt	5	
10	TUM8	Nut	2	
11	TCCM10-60	Bolt	1	
12	TUM10	Nut	1	
13	TCCW7/16-40	Bolt	1	

Part number:
A10503-01

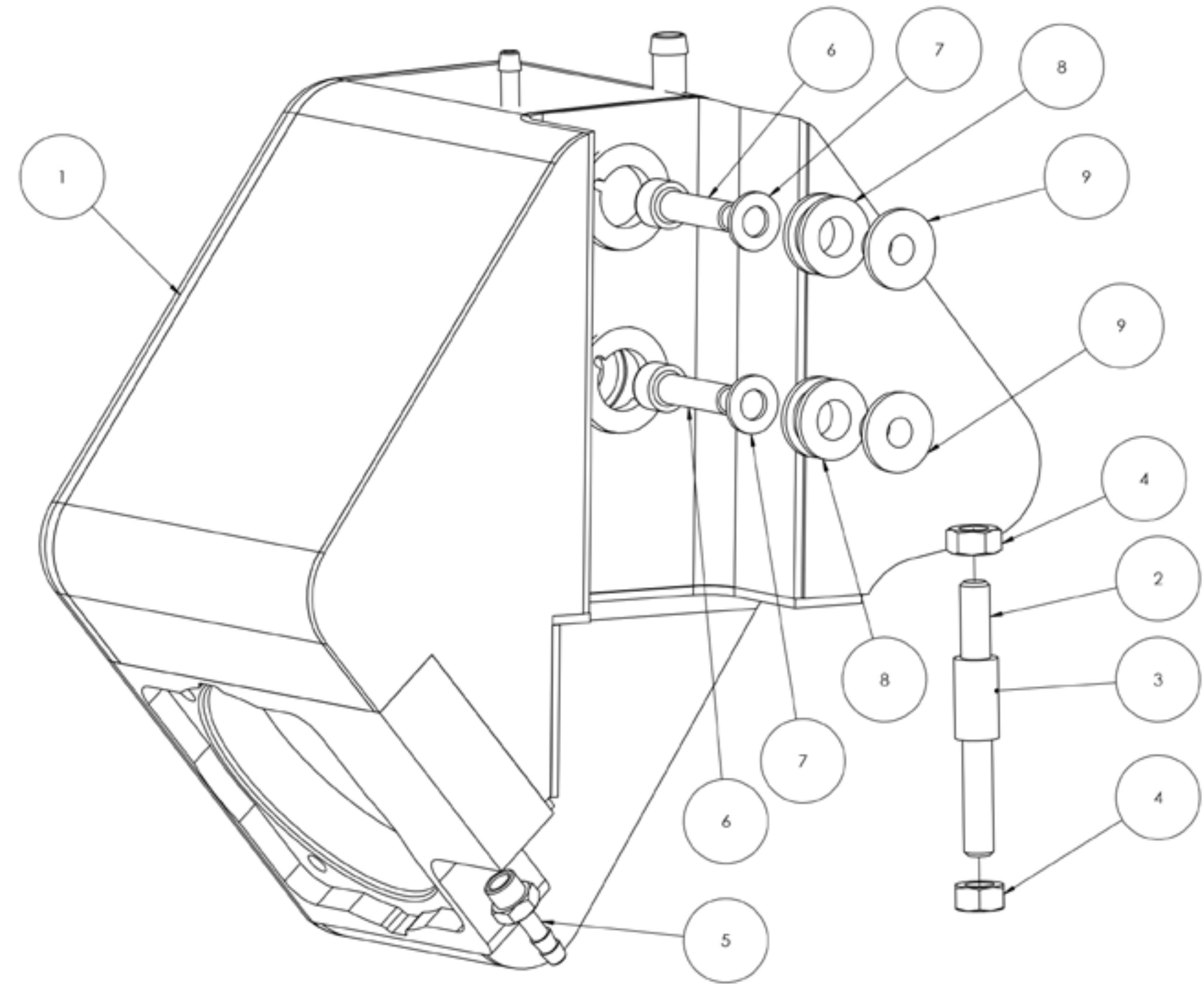
Description:
FRONT PANEL ASSEMBLY



Item	Part No.	Description	Qty.	Remaks
1	29.1.1019-01	Front numberplate	1	Carbon fiber
2	29.1.1100-02	Headlights panel	1	Stainless steel, powder coated
3	29.1.1039-06	Front panel botx	1	Stainless steel, powder coated
4	29.1.1123-01	Bottom cover	1	Stainless steel, powder coated
5	C10048	Headlight Lo	1	E4
6	C10049	Headlight Hi	1	E9
7	29.1.1038-08	Bracket 54 front	2	Aluminium, anodized
8	29.1.1038-09	Bracket 54 rear	2	Aluminium, anodized
9	29.1.1038-06	Bracket 56 front	2	Aluminium, anodized
10	29.1.1038-07	Bracket 56 rear	2	Aluminium, anodized
11	29.1.1082-01	Headlights bar	1	Aluminium, anodized
12	29.1.1081-01	Headlight holder	2	Aluminium, anodized
13	29.1.1017-01	Headlight 10 mm spacer	4	Plastic
14	TCRM6-20	Bolt	3	
15	TUM6	Nut	2	
16	TCCM6-15	Bolt	10	
17	TCCM8-20	Bolt	4	
18	TCHM8-30	Bolt	3	
19	TA8N	Washer	3	
20	TCRM4-20	Bolt	4	
21	29.1.1064-01	Front plate top spacer	1	Aluminium, anodized
22	50.1.0006	Headlights cable	1	
23	TCCM6-10	Bolt	2	

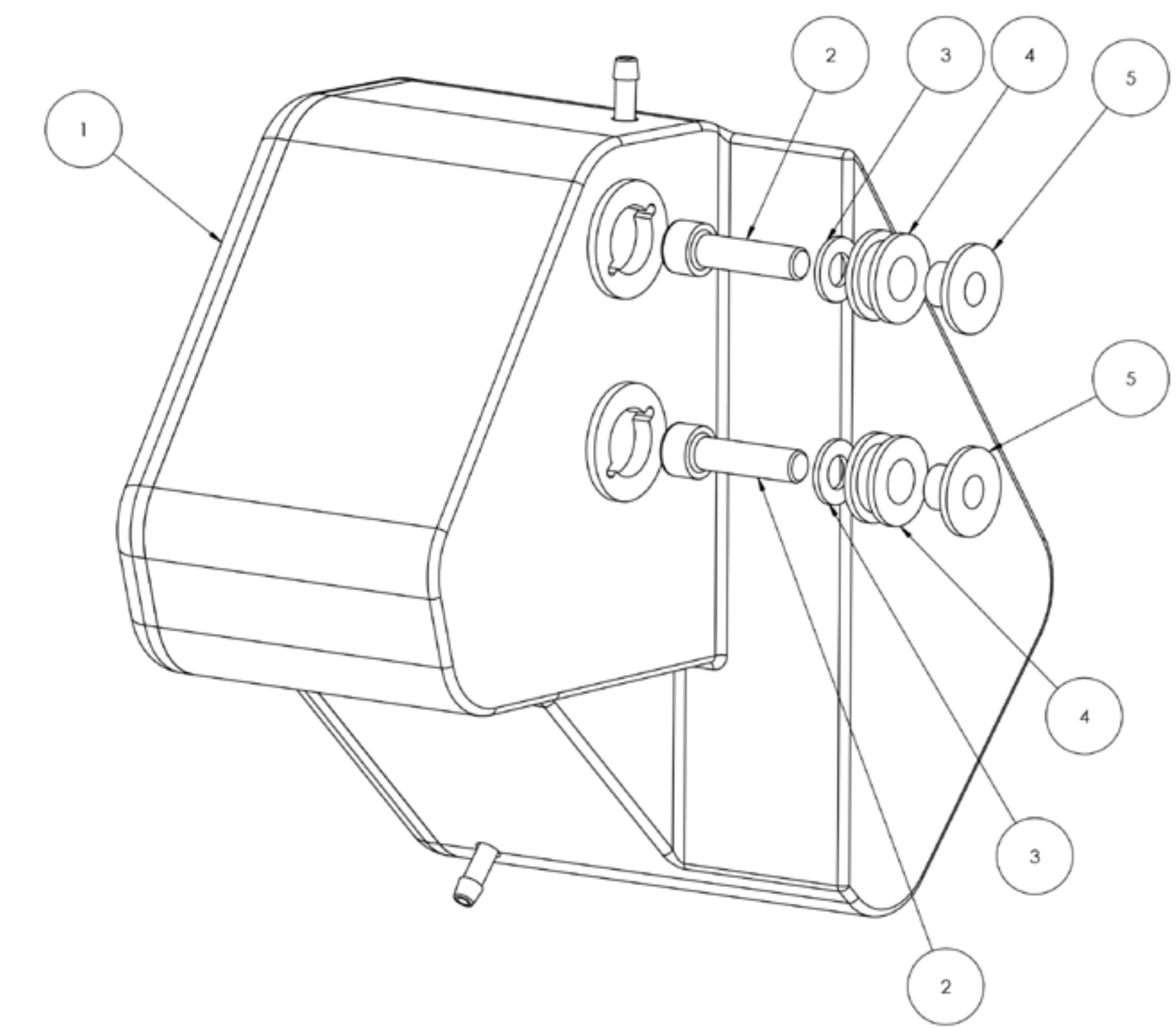
Part number:
A10510-01

Description:
LEFT FUELTANK ASSEMBLY



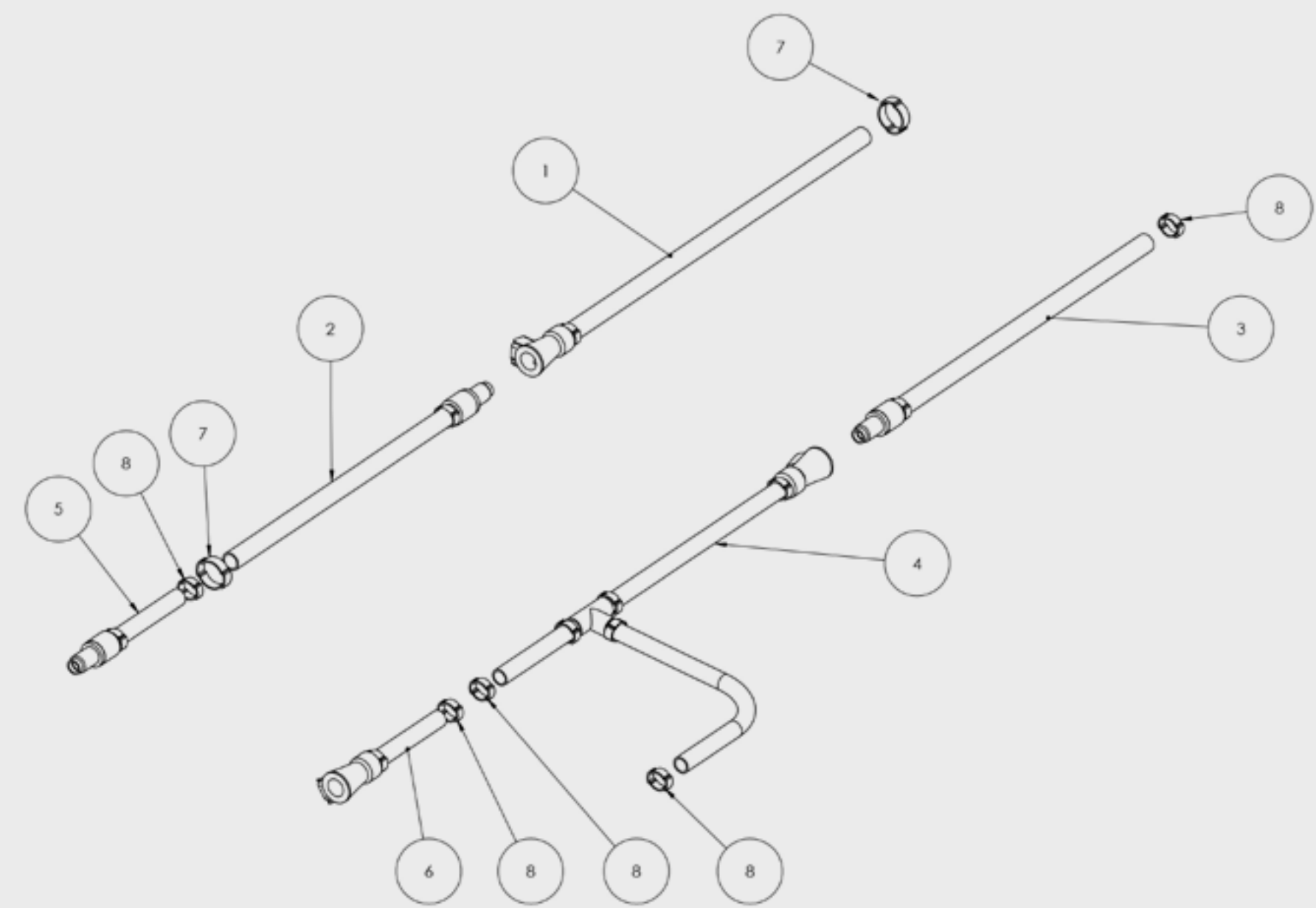
Item	Part No.	Description	Qty.	Remaks
1	29.1.1023-01	Left fueltank	1	Aluminium, anodized or painted
2	29.1.1106-02	Threaded bar	1	
3	29.1.1106-01	Fuelpump spacer	1	
4	29.1.1089-01	Left fuel tube	1	
5	C10054	Fuel connector	1	
6	TCCM8-25	Bolt	2	
7	TA8N	Washer	2	
8	C10042	Rubber mounting	2	
9	29.1.1032-01	Bush	2	

Part number:	Description:
A10509-01	RIGHT FUELTANK ASSEMBLY



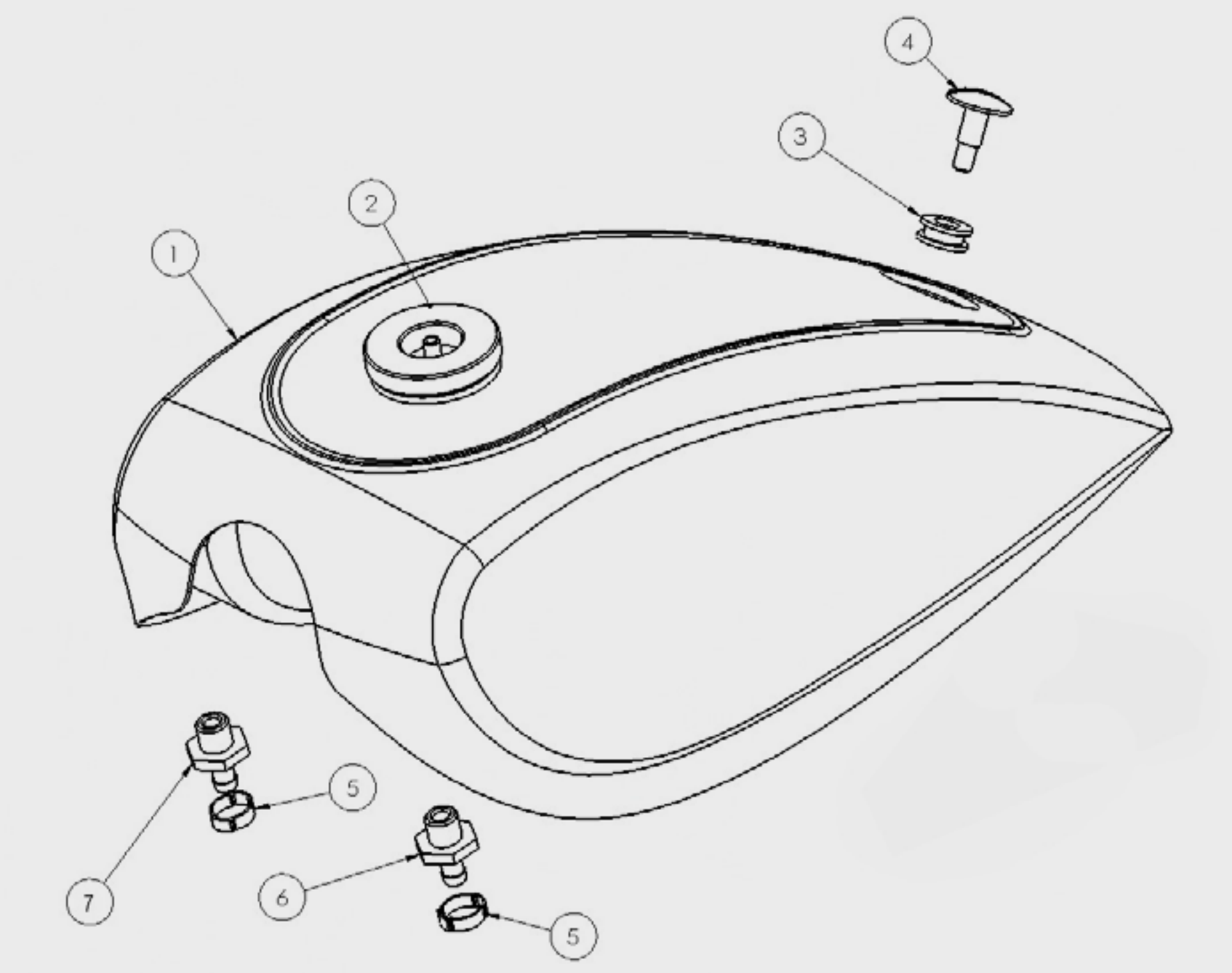
Item	Part No.	Description	Qty.	Remaks
1	29.1.1035-01	Right fueltank	1	Aluminium, anodized or painted
2	TCCM8-30	Screw	2	
3	TA8N	Washer	2	
4	C10042	Rubber mounting	2	
5	29.1.1032-01	Bush	2	

Part number:	Description:
A10535-01	FUELTANK TUBES



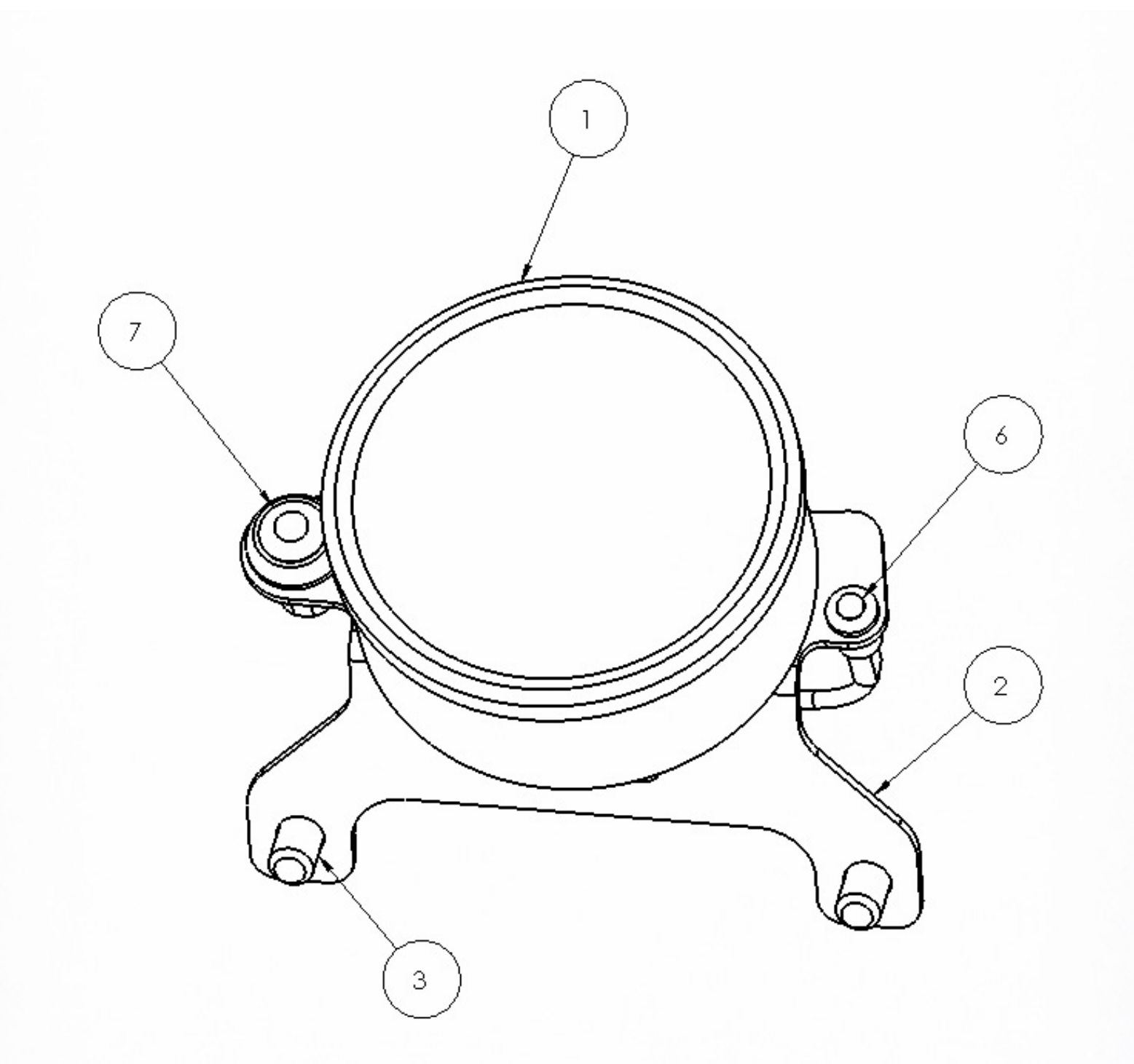
Item	Part No.	Description	Qty.	Remaks
1	29.1.1183-01	Upper tube fuel	1	
2	29.1.1184-01	Lower tube fuel	1	
3	29.1.1185-01	Upper tube air	1	
4	29.1.1186-01	Lower tube air	1	
5	29.1.1187-01	Left fuel tube	1	
6	29.1.1188-01	Right fuel tube	1	
7	C10051	Hose clamp	2	
8	C10050	Hose clamp	2	

Part number:	Description:
A10508-01	TOP FUELTANK ASSEMBLY



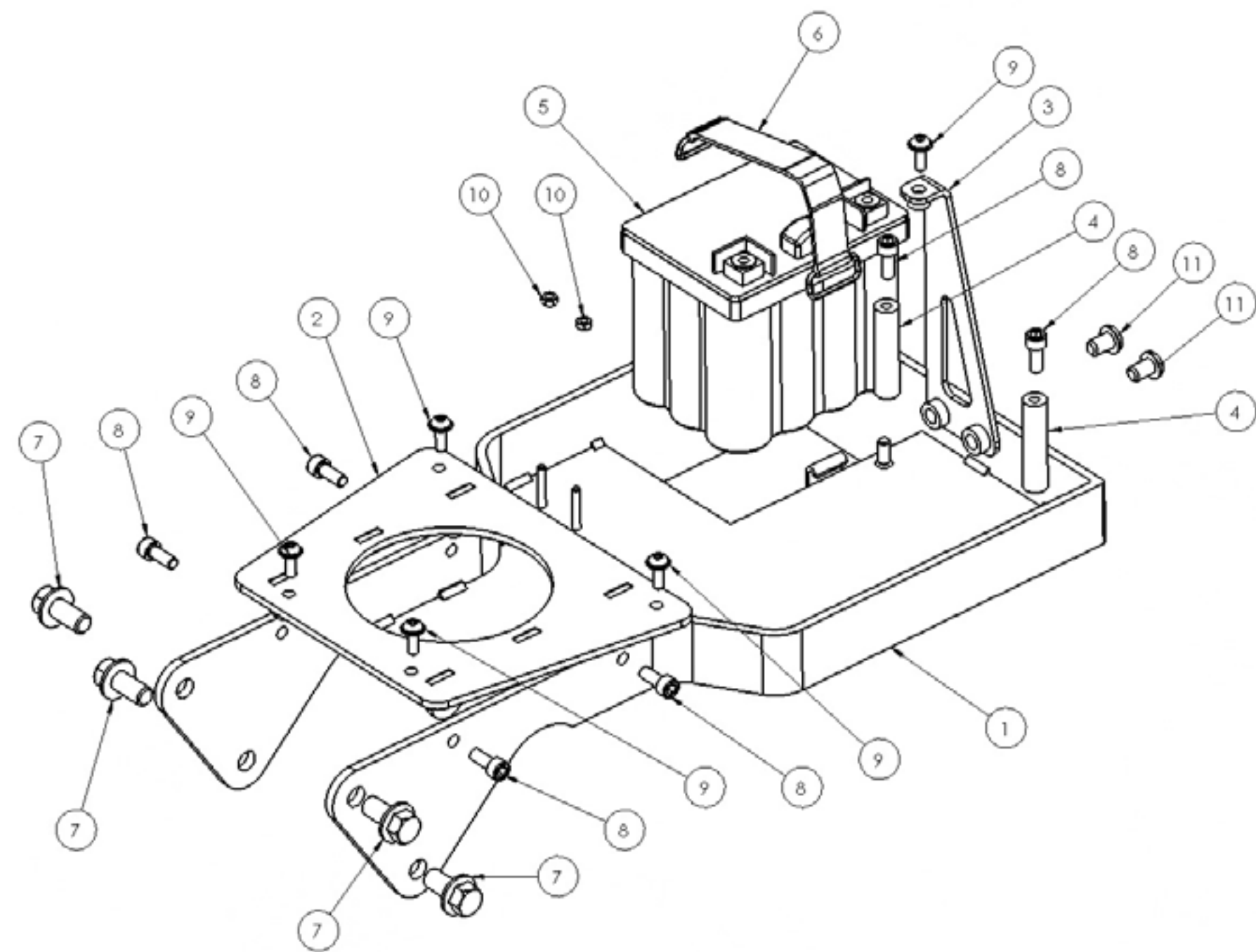
Item	Part No.	Description	Qty.	Remaks
1	29.1.1018-01	Top fueltank	1	Glass fiber
2	29.1.1044-01	Top fueltank cap	1	Aluminium, anodized
3	C10055	Rubber mounting	1	
4	29.1.1054-01	Fueltank screw	1	Stainless steel
5	C10051	Hose clamp	2	
6	29.1.1058-01	Fuel connector	2	Stainless steel
7	29.1.1058-02	Air connector	1	Stainless steel

Part number:	Description:
A10511-01	DISPLAY ASSEMBLY



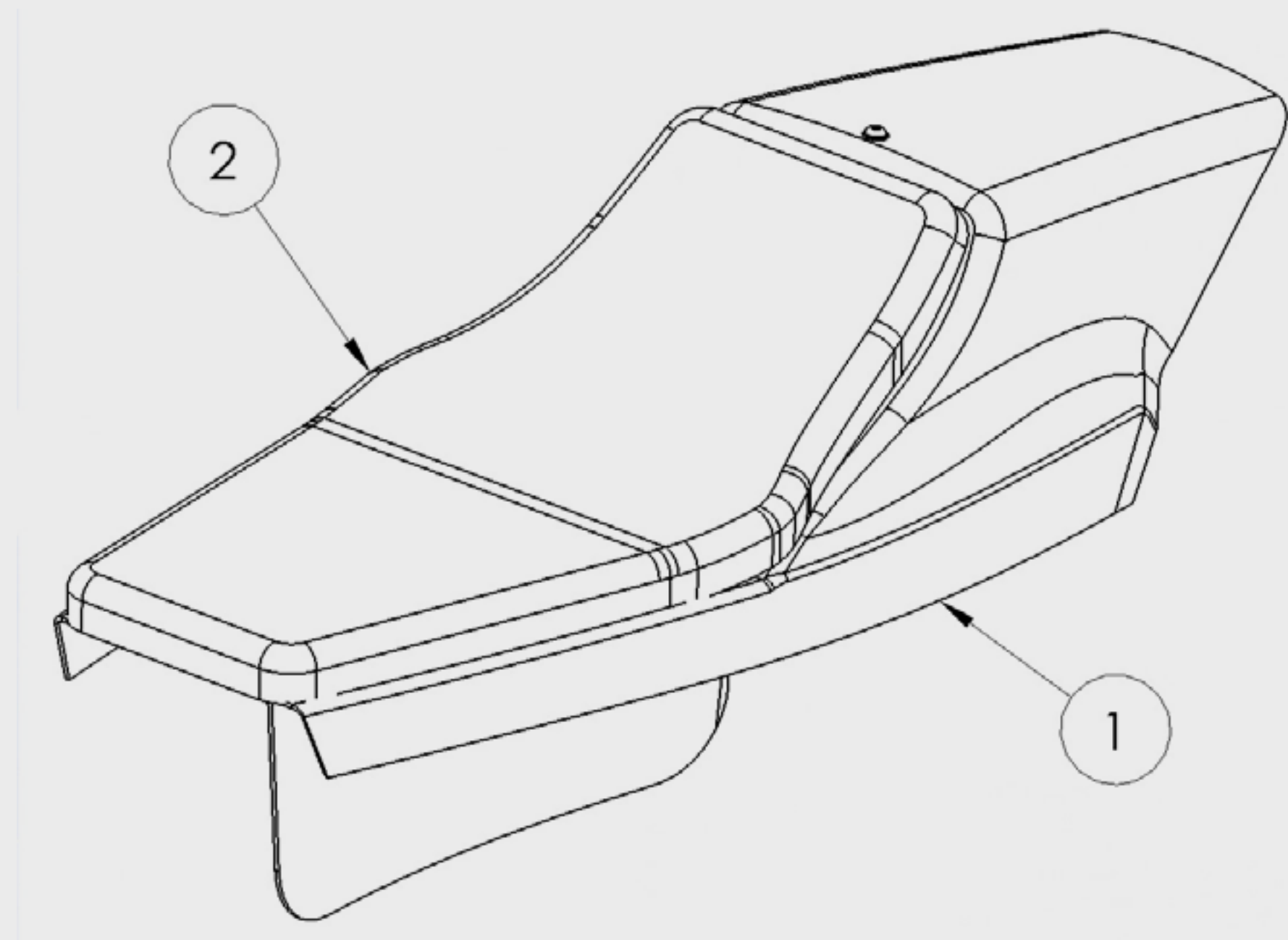
Item	Part No.	Description	Qty.	Remaks
1	C10056	Display Motogadget classic	1	
2	29.1.1042-01	Display bracket	1	Stainless steel, powder coated
3	TCRM4-6	Screw	3	
4	TCRM8-8	Screw	2	
5	50.1.0001-01	Interface cable	1	Connects the display to the Buell original wiring loom
6	50.1.0002-01	Low level fuel led	1	Indicates fuel low level
7	50.1.0003-01	Display configuration button	1	For display configuration
8	C10056-01	Speed sensor	1	Sensor with magnet
9	29.1.1116-04	Speed sensor plate	1	Stainless steel

Part number:	Description:
A10504-01	SUBFRAME ASSEMBLY



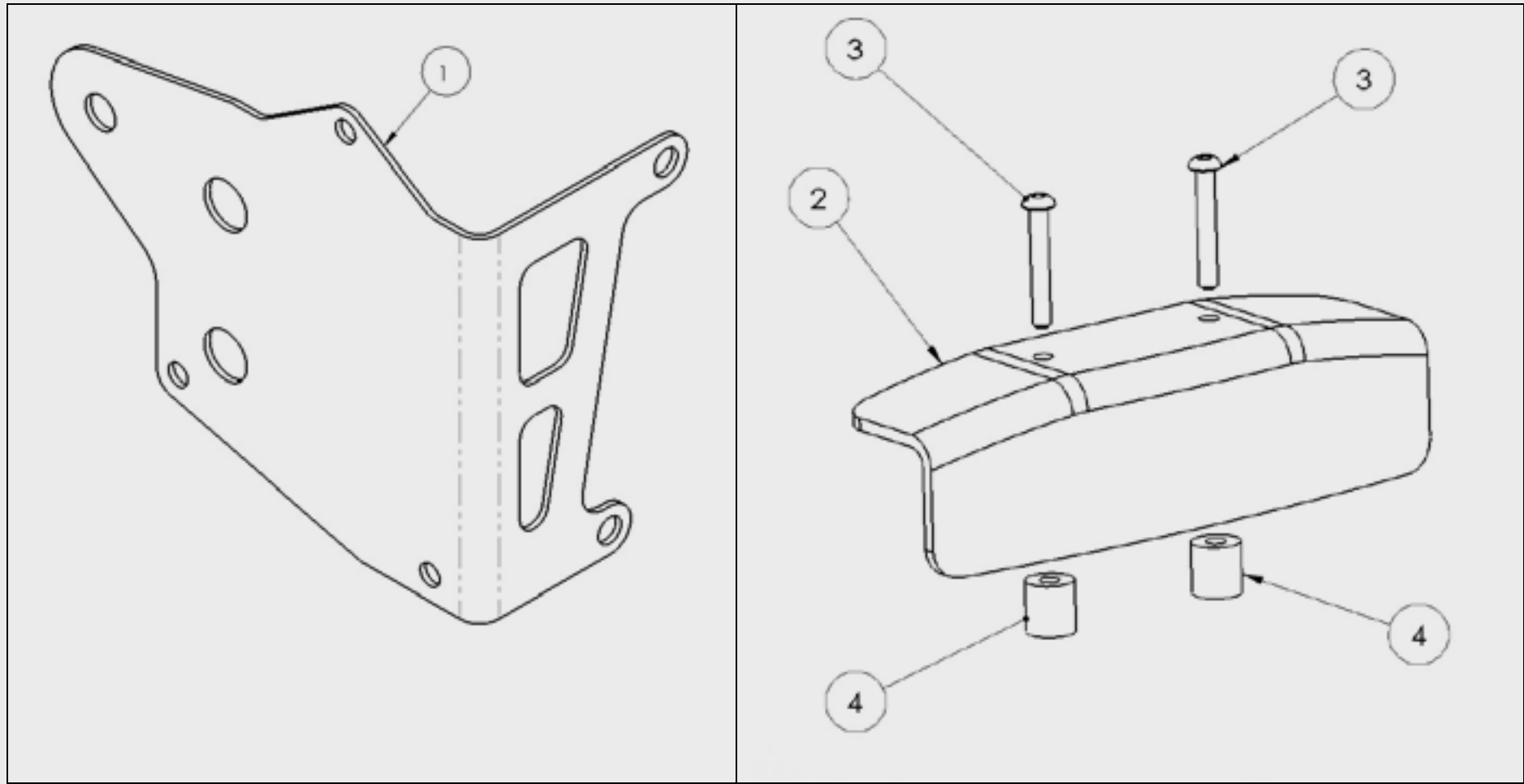
Item	Part No.	Description	Qty.	Remaks
1	29.1.1002-01	Subframe	1	
2	29.1.1003-01	Subframe plate	1	
3	29.1.1093-01	Tail rear bracket	1	
4	29.1.1086-01	ECU spacer	2	
5	C10058	Battery	1	Ballistic lithium battery
6	C10057	Battery rubber band	1	
7	TCHM10-20	Screw	4	
8	TCCM6-15	Screw	6	
9	TCRM6-15	Screw	5	
10	TUM4	Nut	2	
11	TCRM8-12	Screw	2	

Part number:	Description:
A10512-01	SEAT ASSEMBLY



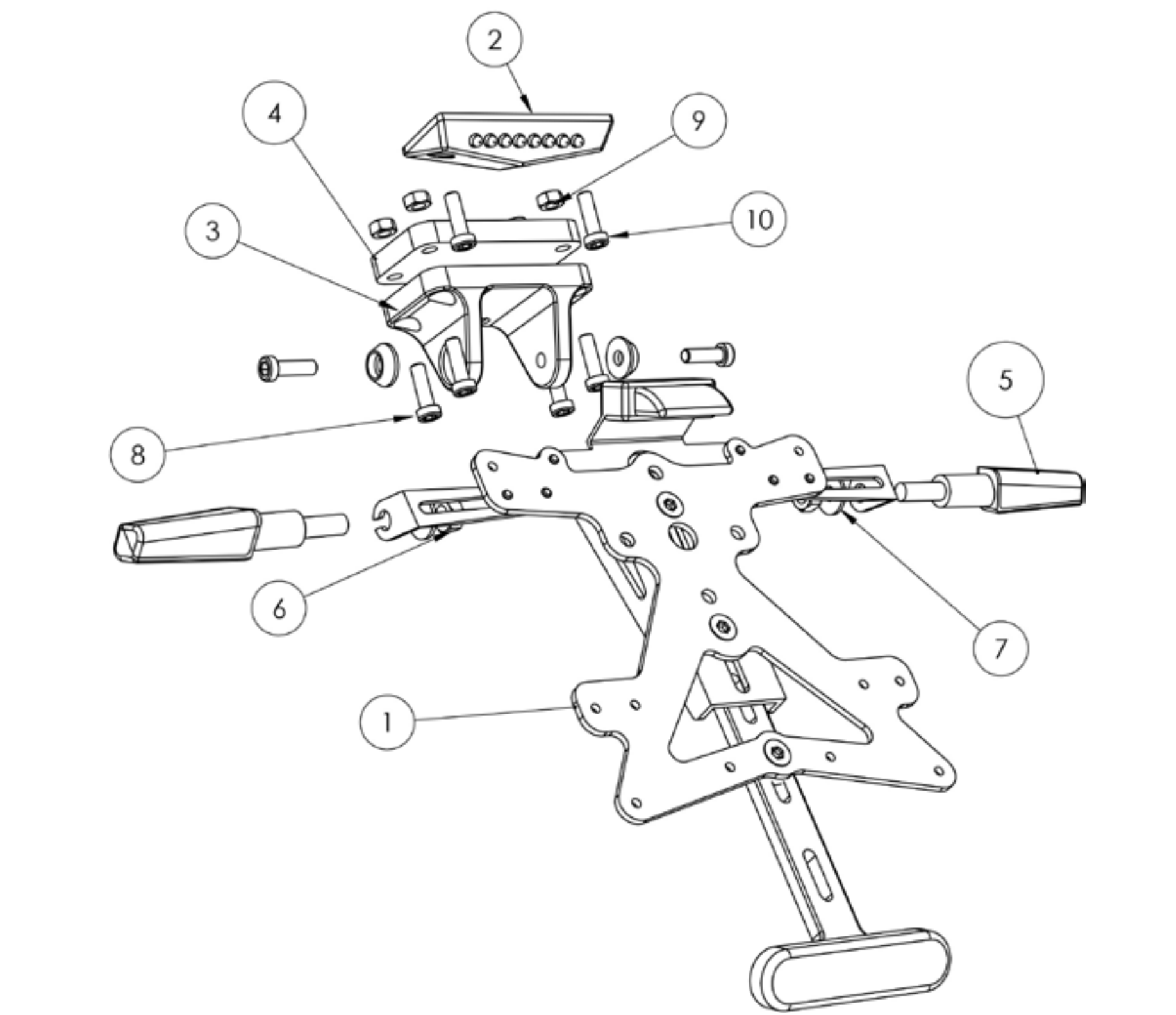
Item	Part No.	Description	Qty.	Remaks
1	29.1.1076-01	Seat	1	Glass fiber
2	29.1.1095-01	Seat foam	1	

Part number: A10513-01	Description: MISCELLANEOUS ASSEMBLY
----------------------------------	---

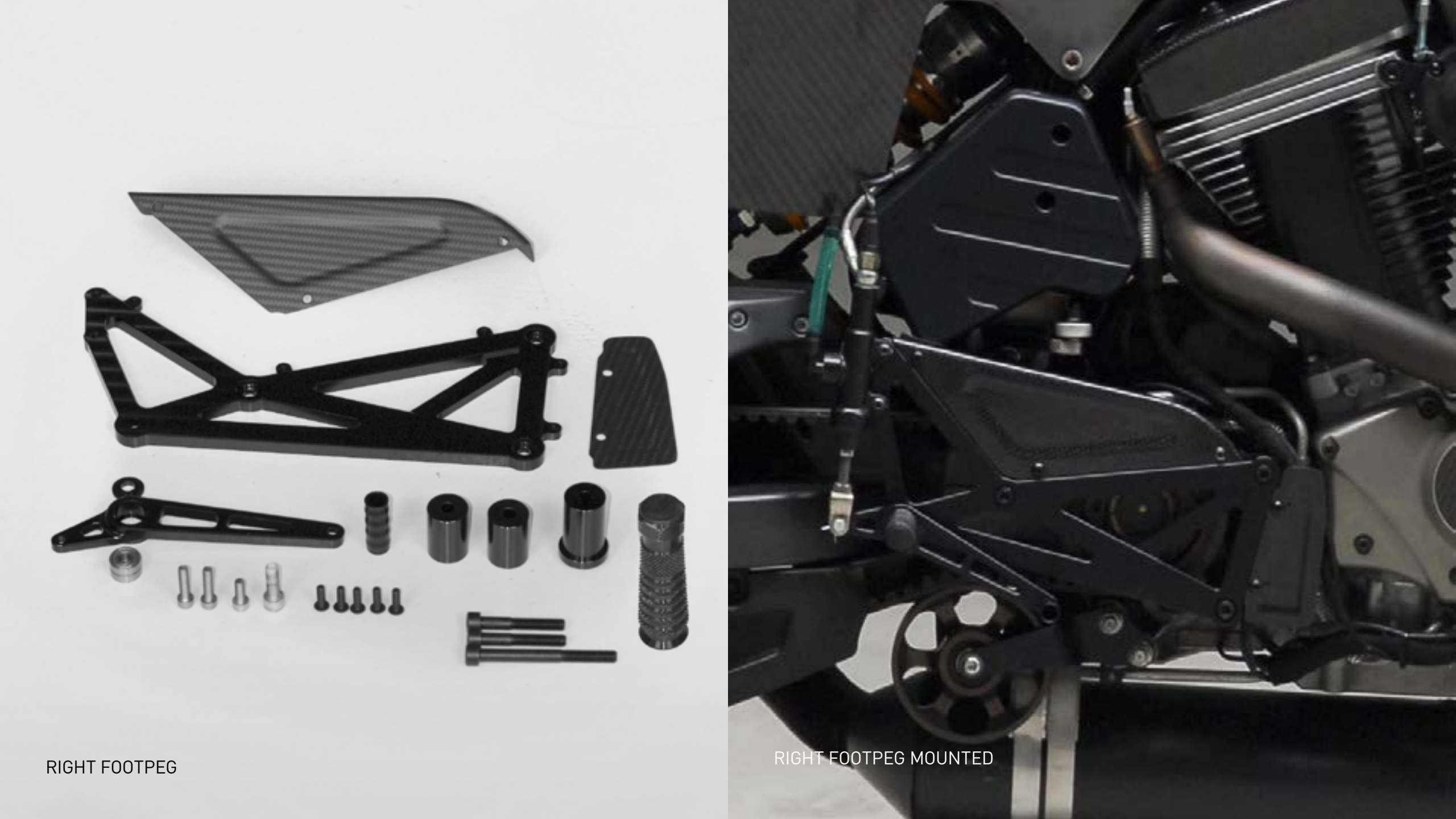


Item	Part No.	Description	Qty.	Remaks
1	29.1.1065-01	Regulator plate	1	Stainless steel, powder coated
2	29.1.1080-01	Head protector	1	Carbon fiber
3	TCRW0.25-1.5	Screw	2	
4	29.1.1084-01	Spacer	2	Aluminium, anodized
5	29.1.1083-01	Engine disc	1	Carbon fiber

Part number: A10536-01	Description: LICENSE PLATE HOLDER ASSY
----------------------------------	--



Item	Part No.	Description	Qty.	Remaks
1	C10061	License Plate Support	1	Aluminium, anodized
2	29.1.1195-01	Rear Brake Light	1	
3	29.1.1160-01	Holder	1	
4	29.1.1194-01	Holder Nuts	1	
5	C10062	Signal Light	4	Front and rear
6	TUM8	Nut	4	
7	TA8N	Washer	4	
8	TCCM6-20	Bolt	4	
9	TUM6	Nut	4	
10	TCCM5-20	Bolt	2	





FRAME



LEFT FUEL TANK



LEFT FUEL TANK MOUNTED



RIGHT FUEL TANK MOUNTED



RIGHT FUEL TANK



DISPLAY ASSEMBLY



OIL RADIATOR

A close-up photograph of a motorcycle engine, specifically the cylinder heads and upper crankcase area. The image is heavily tinted with a warm, reddish-orange color. The engine features prominent cooling fins on the cylinder heads. Various mechanical components, including bolts, hoses, and the timing chain cover, are visible. The overall composition is technical and detailed.

XR1

TECH SPECS

ENGINE

Air/oil cooled 1203cc Thunderstorm V-Twin, 1203 cm3 (it is possible to build it also with the 900 cc engine), 100 Horsepower at 6600 rpm, Torque 110 Nm at 6000 rpm.

FUEL SYSTEM:

49 mm downdraft DDFI II fuel injection

GEARBOX:

5-speed

CLUTCH:

Wet, multi-plate, compensated

FINAL DRIVE:

Belt

FRAME

Steel central Spine Bottpower frame, with vibration isolation system.

FRONT SUSPENSION:

Showa inverted fork with adjustable compression damping, rebound damping and spring preload

REAR SUSPENSION:

Showa shock absorber

FRONT BRAKE:

ZTL type brake, 375 mm stainless steel floating rotor, 6 piston caliper

REAR BRAKE:

240 mm stainless steel rotor, single piston floating caliper

DIMENSIONS

Geometries are the same than the original Buell XB donor bike.

WHEELBASE:

54 in OR 1372 mm

SEAT HEIGHT:

33 in OR 840 mm

GROUND CLEARANCE:

4.3 in OR 109 mm

WEIGHT:

179 kgs (20 kgs less than the original Buell XB donor bike).

FUEL CAPACITY:

11 liters. The bike has a top fuel tank and 2 secondary fuel tanks. Original Buell fuel pump located in the left secondary fuel tank.

TYRES:

Front 120/70xZR17

Rear 180/55xZR17

XR1

PRICE LIST

XR1 STAGE 1

PART N°	DESCRIPTION	RETAIL PRICE
A10501-01	Frame assembly	2310
A10504-01	Subframe assembly	935
A10503-01	Front panel assembly	594
A10506-01	Right footpeg assembly	565
A10505-01	Left footpeg assembly	230
A10507-01	Air intake assembly	710
A10511-01	Display assembly	748
A10508-01	Top fuel tank assembly (carbon fiber)	1050
A10509-01	Right fuel tank assembly	790
A10510-01	Left fuel tank assembly	946
A10512-01	Seat assembly (carbon fiber)	590
A10513-01	Miscellaneous assembly	193
A10514-01	License plate holder assembly	430
A10502-01	Oil radiator	572
TOTAL		10088

NOTES:

All prices in euros, without VAT. Prices do not include shipping.

Stage 2 kit is just an orientative proposal, there are many different options available.

If you want to configure your own Stage 2 kit, please contact us at info@bottpower.com

XR1 STAGE 2 / With Special Parts

PART N°	DESCRIPTION	RETAIL PRICE
A10501-01	Frame assembly	2310
A10504-01	Subframe assembly	935
A10503-01	Front panel assembly	594
A10506-01	Right footpeg assembly	565
A10505-01	Left footpeg assembly	230
A10507-01	Air intake assembly	710
A10511-01	Display assembly	748
A10508-01	Top fuel tank assembly (carbon fiber)	1050
A10509-01	Right fuel tank assembly	790
A10510-01	Left fuel tank assembly	946
A10512-01	Seat assembly (carbon fiber)	590
A10513-01	Miscellaneous assembly	193
A10514-01	License plate holder assembly	430
A10502-01	Oil radiator	572
A10516-01	ISR components	1114
A11002-01	TA-KE composite handlebar	570
A10518-01	Triple clamp	1200
A10519-01	Active throttle body	220
A10520-01	Torque Hammer silencer	880
A10525-01	Titanium headers	850
A10521-01	Ohlins shock	1450
A10522-01	Spark plug cables	35
A10531-04	Seat pad 3 pieces in Alcantara	420
TOTAL		16827



XR1

FAQ

FAQ

Which Buell models can be used as a donor bike to build a BOTT XR1?

The kit has been designed to use a Buell XB as a donor bike. The ideal is to use a Buell model with long swingarm: Buell XB12SS, Buell XB12STT and Buell Ulysses. If you want to use a short swingarm Buell XB as a donor bike, the easiest way to do it is to buy a long swingarm with its corresponding shock and belt and use it instead of the short one.

Is the BOTT XR1 road legal?

The bike has been designed using homologated components (headlighs, signal lights, brake light, license plate support, etc). Each country has its own laws and requirements and if the purchaser wants to register his BOTT XR1 to be street legal, he should study the best procedure to do it in his country.

How difficult is it to assembly a BOTT XR1 using the kit?

This kit has been designed to be a bolt on kit. This means that you don't need to cut or weld anything.

The kit uses the original Buell wiring loom, so it is not necessary to use a custom one.

We provide an assembly manual with each kit, and each customer has full technical support, this means that you can ask us each time that you have a doubt.

Do you sell complete bikes?

Yes, we will be very happy to build a complete bike for you, customized at your own taste.

I would like a pink bike with a yellow saddle and carbon fiber rims. Is it possible?

Yes, we take each bike as a single project. We enjoy building different versions of our bikes.

Where can I buy a Bottpower bike?

You can do it through our website. If you are interested please send us an email.

Do you sell your bikes worldwide?

Yes, we ship our kits and bikes worldwide. We have dealers in some countries, please check the dealers list to see if there is one close to you.

Does the BOTT XR1 come with a warranty?

All the parts that we include in our kits have 3 years of warranty.