

 БОТТPOWER

СЛАВЕНА XR9

www.bottpower.com



XR9

The XR9 Carbona has been conceived using the experience gathered at the iconic Pikes Peak race when Bottpower won in two categories and finished fourth overall back in 2017.

The bike weights 158kg (29 kg less than a standard Yamaha XSR900) and has 115 HP with lots of torque. Its original 3 cylinder engine from Yamaha ensures lots of fun.







YAMAHA

CERACARBON
XR9

REMOTESTOP

CeraCarbon
RACING

XR9

KIT DESIGN & DEVELOPMENT

High quality surfaces designed with CAD.



Composites manufactured using autoclave.





As Bottpower does with all their motorbikes, the development work continued at the track with several tests performed by professional riders.





XR9

THE BIKE

THE BIKE

The BOTT XR9 consists on a carbon fiber kit to be assembled on all Yamaha MT09/XSR900 (2017 and beyond). It is formed by several assemblies and different extras and special parts to upgrade it. This allows every customer to customize his motorbike at his own taste. In fact, every BOTT XR9 out there looks different. Fuel tank cover with integrated air intakes (carbon fibre)

CARBON FIBRE SEAT & TAIL INCLUDING ALCANTARA SADDLE, TAIL & SIGNAL LIGHTS

FRONT NUMBER PLATE, WITH INTEGRATED DRL (LED)

RADIATOR COVERS WITH WINGLETS, AND HIGH/LOW BEAM HEADLIGHTS

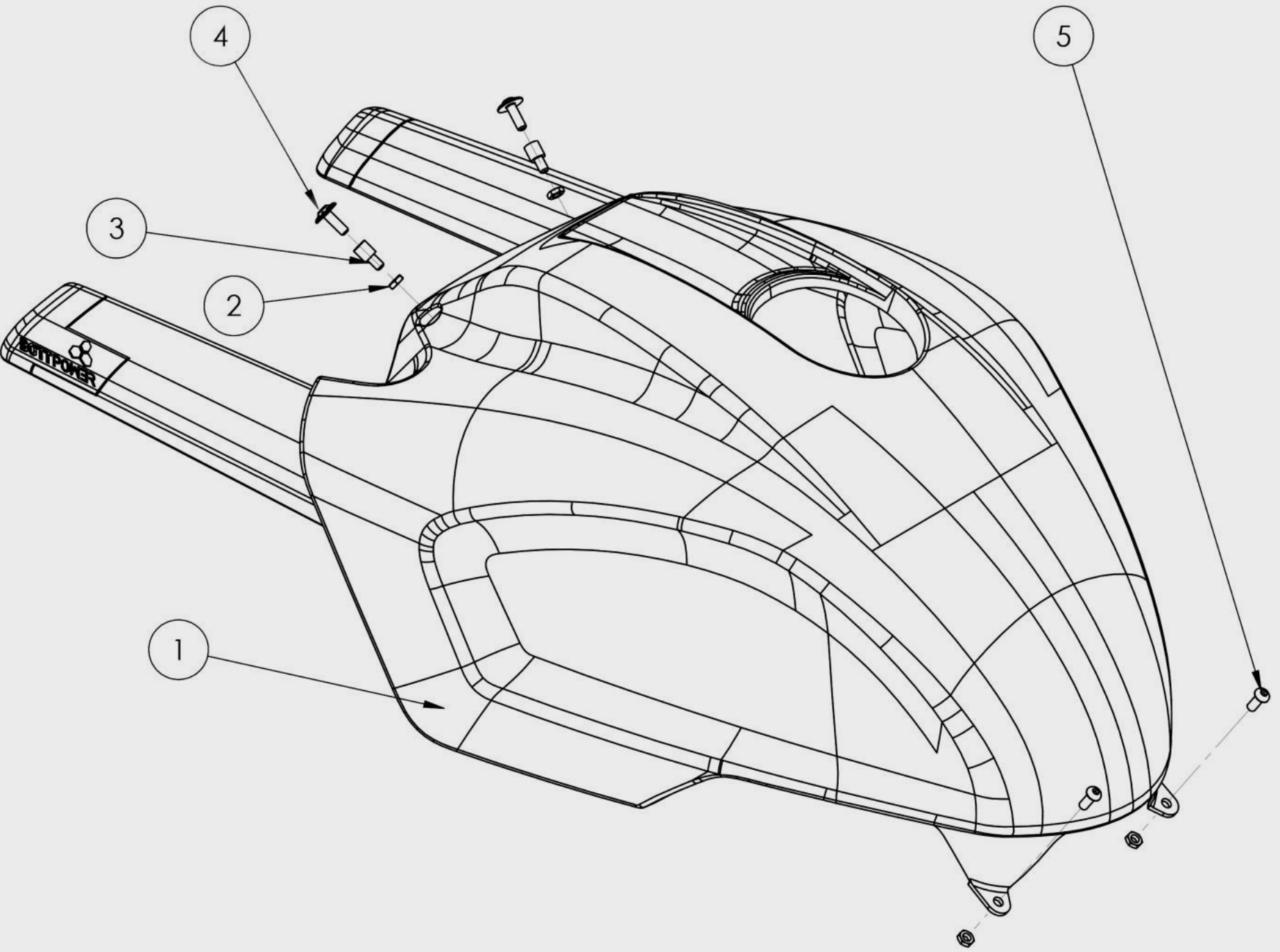
LICENSE PLATE HOLDER

SPROCKET COVER

BELLY PAN

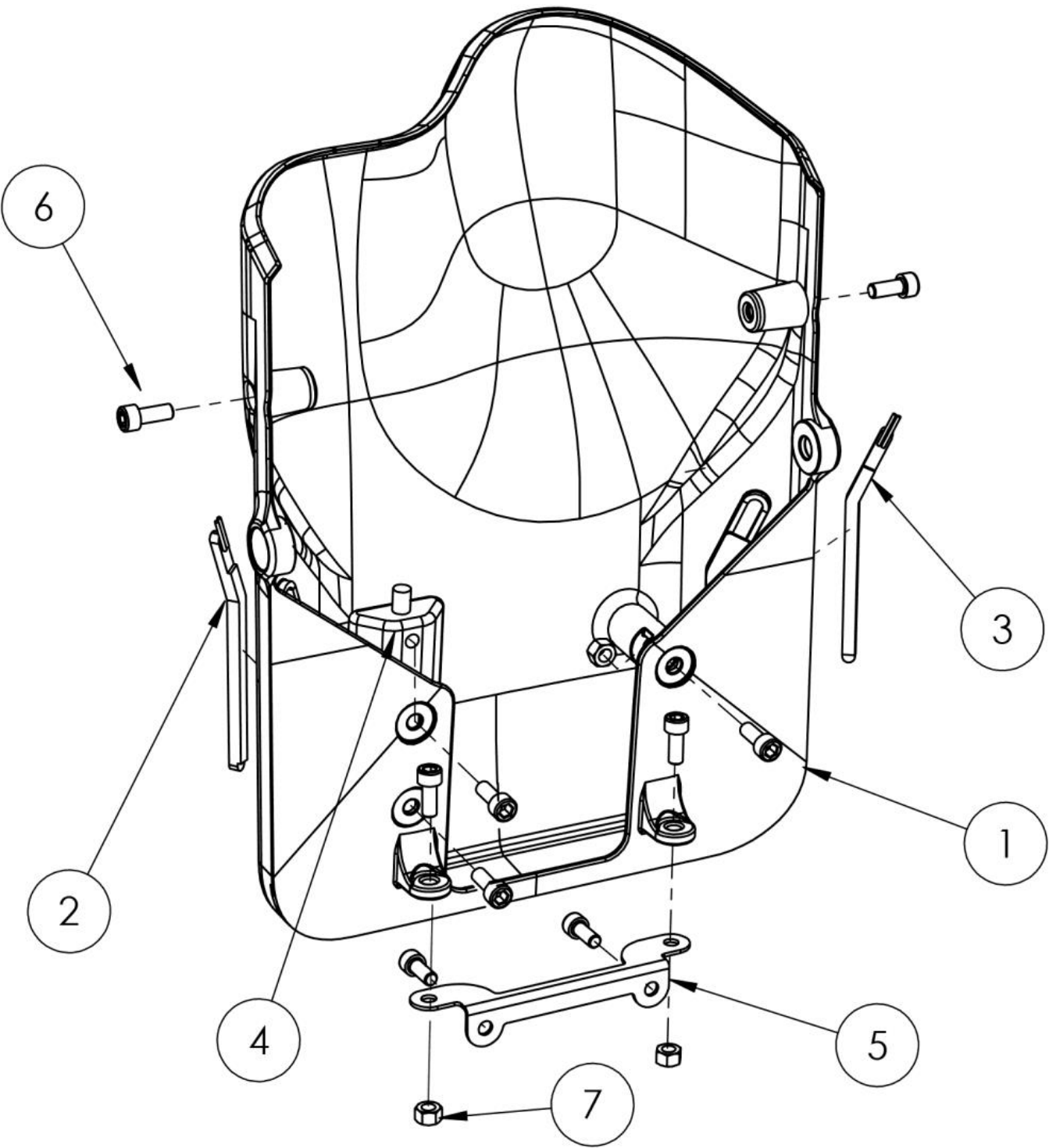


Part number:	Description:
A10601-01	TANK COVER ASSEMBLY



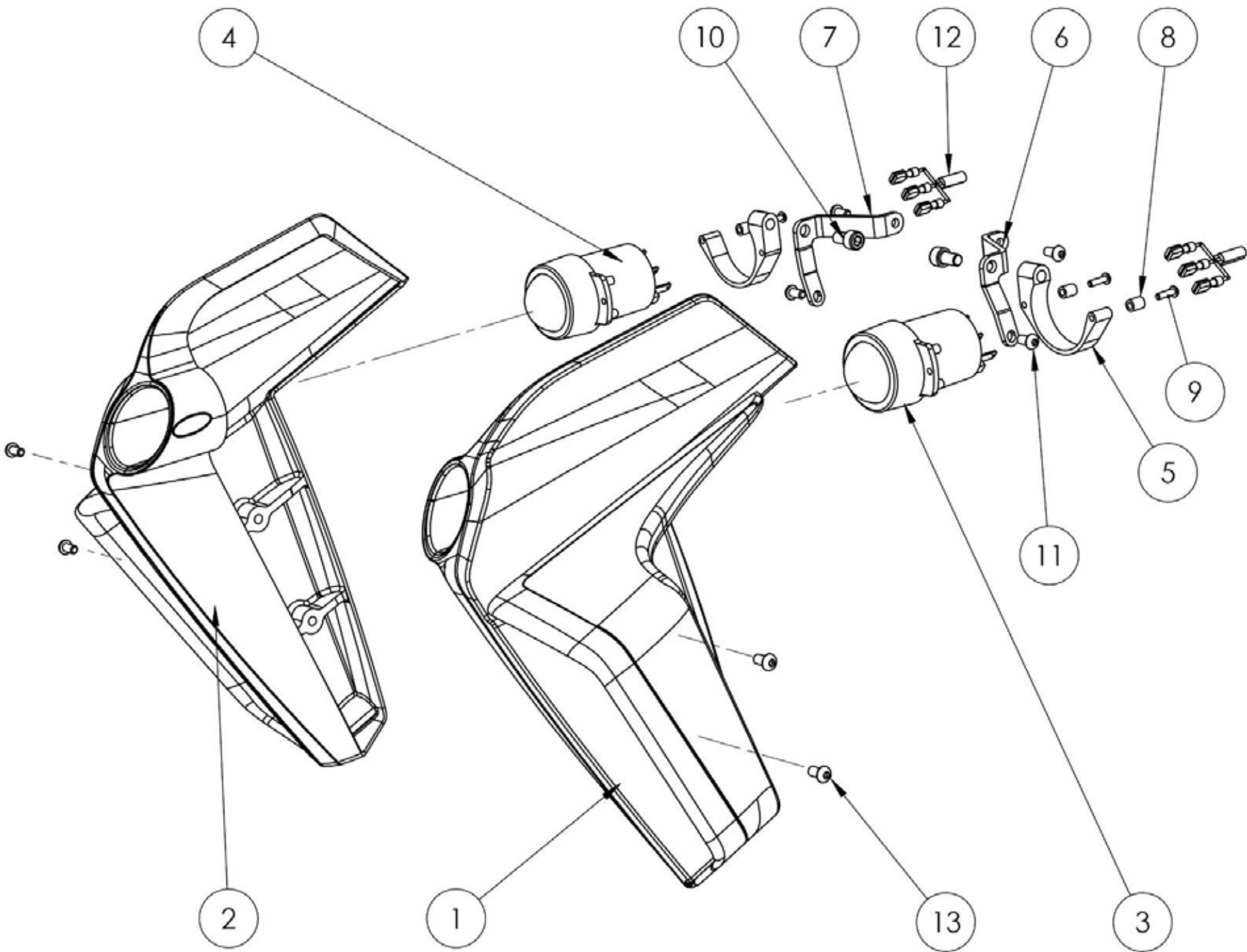
Item	Part No.	Description	Qty.	Remaks
1	28.1.0018-01	Fuel tank cover	1	
2	TUM6	Nut	4	
3	28.1.0019-01	Fuel tank cover spacer	2	
4	TCRM6-25	Bolt	2	
5	TCRM6-20	Bolt	2	

Part number:	Description:
A10602-01	FRONT PLATE



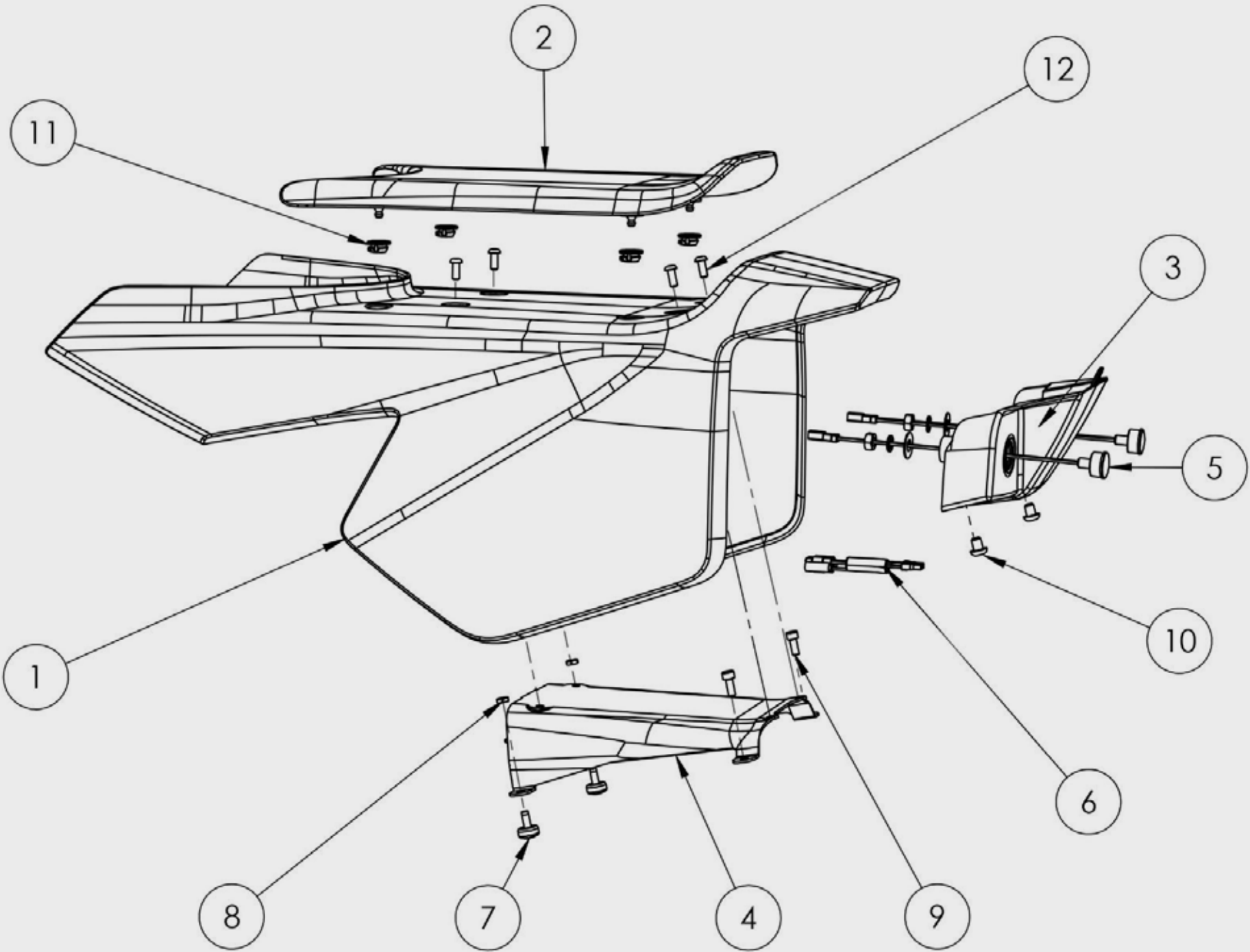
Item	Part No.	Description	Qty.	Remaks
1	28.1.0008-01	Front plate	1	
2	C10064	DRL left	1	
3	C10064	DRL right	1	
4	28.1.0051-01	DRL interface cable	1	
5	28.1.0058-01	Front plate bracket	1	
6	TCCM6-15	Bolt	8	
7	TUF-M6	Nut	2	

Part number:	Description:
A10603-01	RADIATOR COVERS



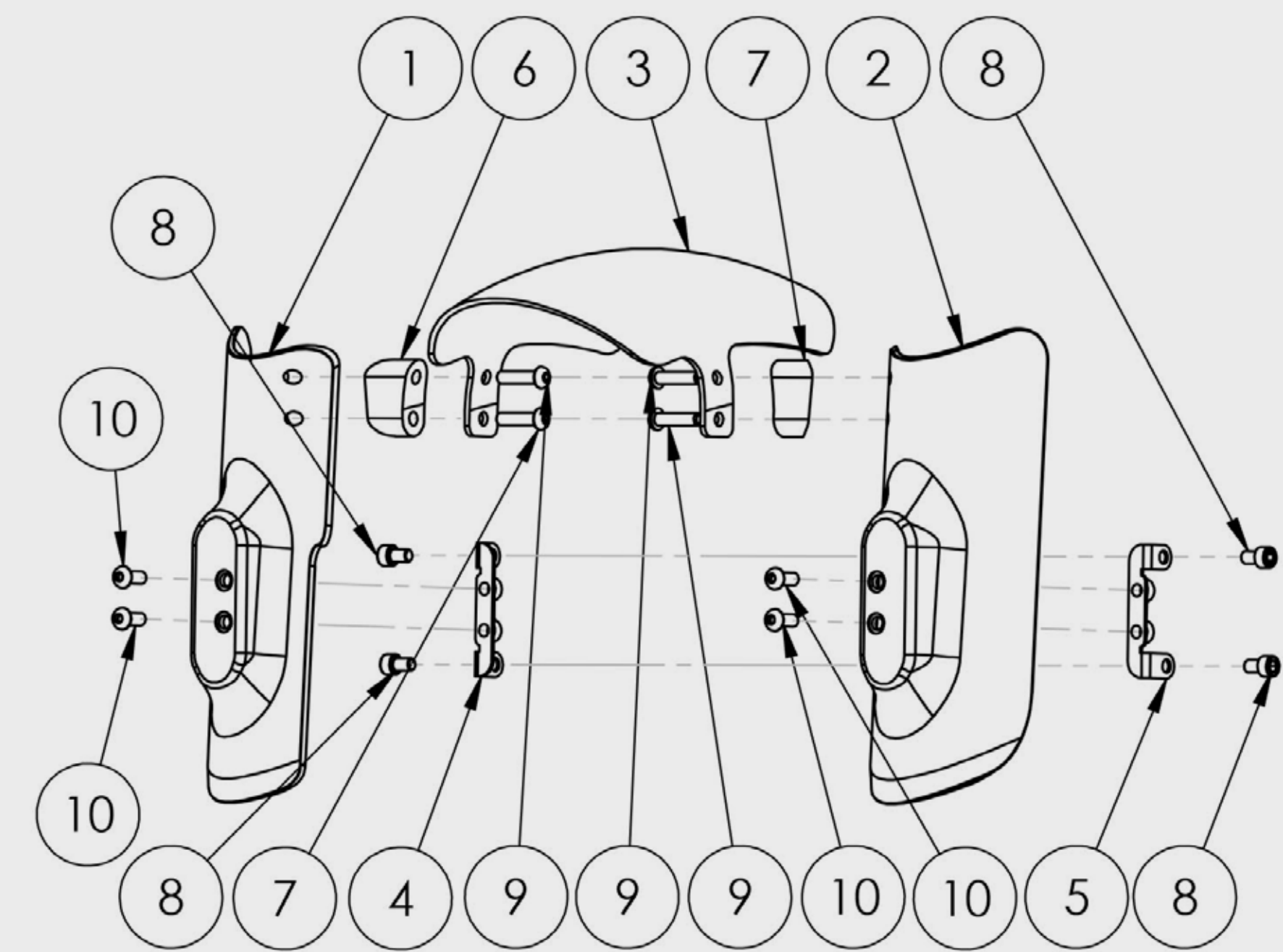
Item	Part No.	Description	Qty.	Remaks
1	28.1.0009-01	Left radiator cover	1	
2	28.1.0010-04	Right radiator cover	1	
3	C10048	Headlight Lo	1	
4	C10049	Headlight Hi	1	
5	29.1.1081-01	Headlight holder	2	Aluminium, anodized
6	28.1.0002-01	Left headlight plate	1	
7	28.1.0002-02	Right headlight plate	1	
8	29.1.1017-01	Headlight 10 mm spacer	4	
9	TCRM4-20	Bolt	4	
10	TCCM8-30	Bolt	2	
11	TCRM6-20	Bolt	2	
12	28.1.0020-01	Headlight interface cable	2	
13	TCRM6-20	Bolt	4	

Part number:	Description:
A10605-01	SEAT ASSEMBLY



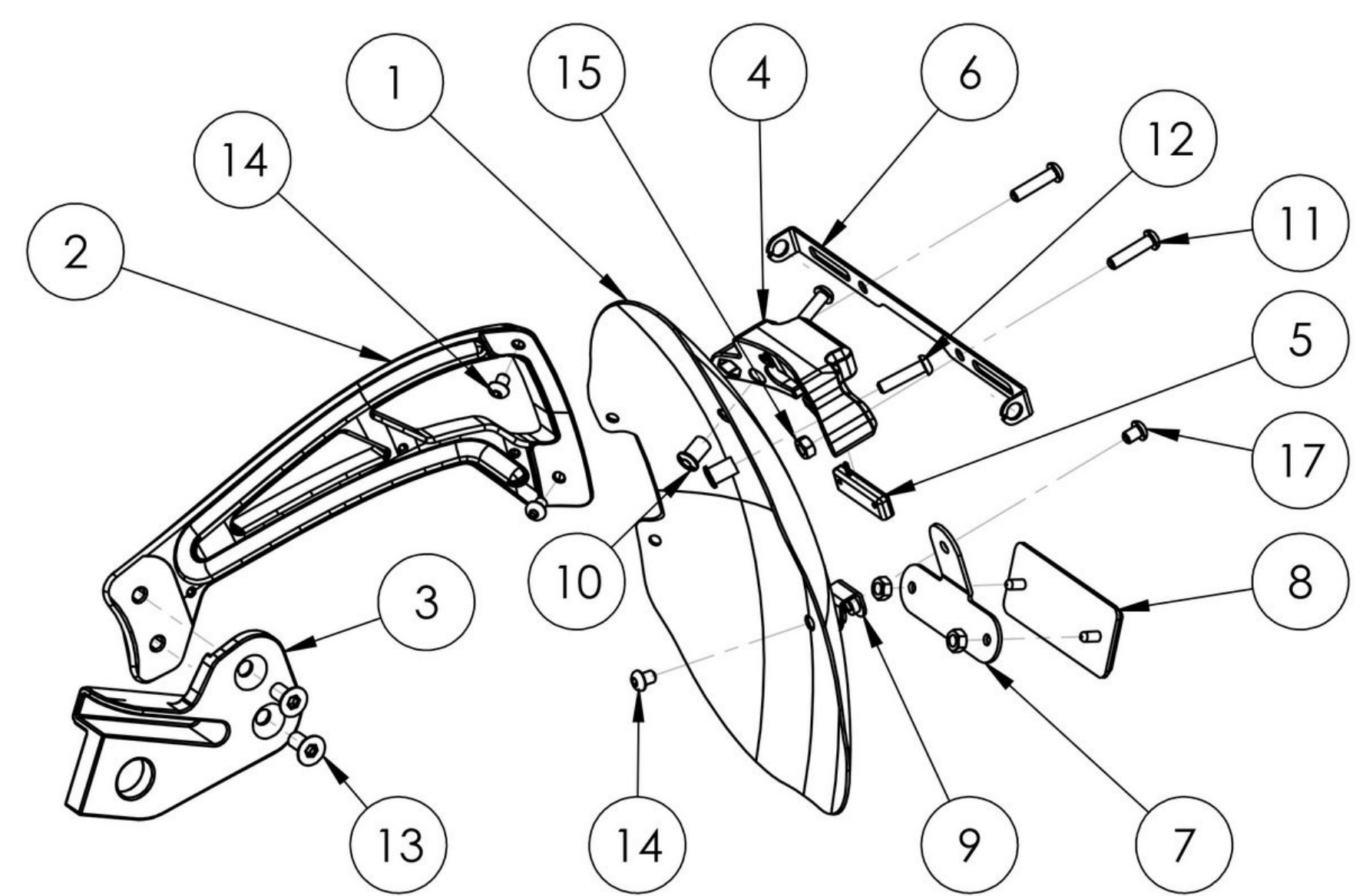
Item	Part No.	Description	Qty.	Remaks
1	28.1.0024-01	Seat	1	
2	28.1.0025-01	Saddle	1	
3	28.1.0013-01	Salad box	1	
4	28.1.0001-01	Seat Bracket	1	
5	28.1.0026-01	Rear light	2	
6	28.1.0054-01	Rear Interface cable	1	
7	28.1.0028-01	Seat bracket spacer	2	
8	TUM6	Nut	2	
9	TCCM6-15	Bolt	2	
10	TCRM8-15	Bolt	2	
11	C10065	Female insert	4	
12	TCRM6	Bolt	4	

Part number:	Description:
A10507-01	FORK COVERS & FENDER



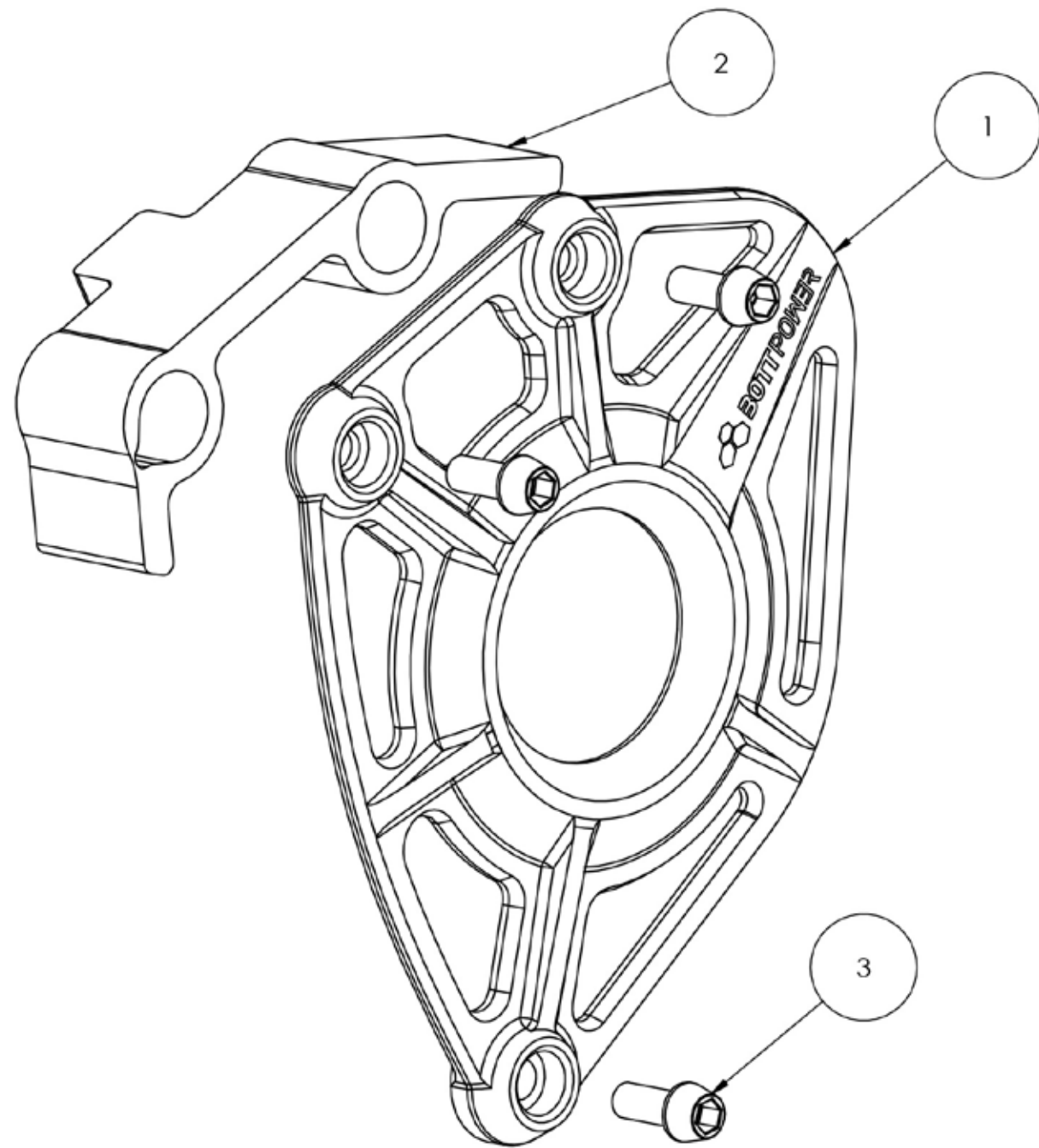
Item	Part No.	Description	Qty.	Remaks
1	28.1.0040-01	Fork guard stock right	1	
2	28.1.0039-01	Fork guard stock left	1	
3	28.1.0021-01	Carbon fiber fender	1	
4	28.1.0034-01	Fork guard plate right	1	
5	28.1.0038-01	Fork guard plate left	1	
6	28.1.0044-01	Fork guard spacer right	1	
7	28.1.0045-01	Fork guard spacer left	1	
8	TCRM6x10	Bolt	4	
9	TCRM6x35	Bolt	4	
10	TCRM6x15	Bolt	4	

Part number:	Description:
A11000-02	LICENSE PLATE HOLDER



Item	Part No.	Description	Qty.	Remaks
1	28.1.0040-01	Carbon fiber fender	1	
2	28.1.0039-01	CNC arm	1	Aluminium, CNC
3	29.1.1945-02	Arm plate	1	Aluminium, CNC
4	26.1.0107-01	Led holder	1	Plastic
5	C10079	Led	1	
6	26.1.0108-01	Signal light bracket	1	
7	28.1.1803-01	Cathadrioptic plate	1	
8	C10080	Cathadrioptic	1	
9	26.1.0109-01	License plate bracket	1	
10	IN-M6	Insert nut	2	
11	TCRM6x12	Bolt	2	
12	TCRM6x25	Bolt	2	
13	TCAM8x6	Bolt	2	
14	TCRM6x12	Bolt	1	
15	TUM6	Nut	3	

Part number:	Description:
A11001-01	SPROCKET COVER



Item	Part No.	Description	Qty.	Remaks
1	26.1.1002-01	Sprocket cover	1	Aluminium, CNC
2	26.1.1003-01	Sprocket top cover	1	Aluminium, CNC
3	TCLM6x15-TI	Titanium bolt	3	Titanium
4		Zip ties	2	Plastic

SPROCKET COVER



BOTTPower TA-KE COMPOSITE HANDLEBAR



BOTTPower CARBON FIBER PLATE HOLDER



XR9

TECH SPECS

ENGINE

ENGINE TYPE - NUMBER OF CYLINDERS	In-line three, four-stroke
ENGINE DETAILS	-
FUEL SYSTEM	Injection
ENGINE SIZE - DISPLACEMENT -	847.00 ccm (51.68 cubic inches)
ENGINE CAPACITY	
BORE X STROKE	78.0 x 59.1 mm (3.1 x 2.3 inches)
COMPRESSION RATIO	11.5:1
NUMBER OF VALVES PER CYLINDER	4
CAMSHAFT VALVETRAIN CONFIGURATION	Double Overhead Cams/Twin Cam (DOHC)
MAXIMUM POWER - OUTPUT - HORSEPOWER	113.45 HP (82.8 kW)) @ 10000 RPM
MAXIMUM TORQUE	87.50 Nm (8.9 kgf-m or 64.5 ft.lbs) @ 8900 RPM
ENGINE MAXIMUM RPM	-
COOLING SYSTEM	Liquid
LUBRICATION SYSTEM	Wet sump
ENGINE OIL CAPACITY	3.40 litres (3.59 quarts)
EXHAUST SYSTEM	-
GEARBOX	6-speed
TRANSMISSION TYPE, FINAL DRIVE RATIO	Chain
CLUTCH TYPE	Multiplate assist and slipper clutch

FRAME

FUEL TANK CAPACITY	14.00 litres (3.70 gallons)
RESERVE FUEL CAPACITY	-
CARRYING DETAILS AND CAPACITY	-
FRONT SUSPENSION	41mm inverted fork, fully adjustable
FRONT SUSPENSION TRAVEL	137 mm (5.4 inches)
REAR SUSPENSION	Single shock, adjustable preload and rebound damping
REAR SUSPENSION TRAVEL	130 mm (5.1 inches)
FRONT TYRES - RIMS DIMENSIONS	120/70-ZR17
REAR TYRES - RIMS DIMENSIONS	180/55-ZR17
FRONT BRAKES	Double disc. ABS. Hydraulic.
REAR BRAKES	Single disc. ABS. Hydraulic.
FRONT BRAKES DIMENSIONS - DISC DIMENSIONS	298 mm (11.7 inches)
REAR BRAKES DIMENSIONS - DISC DIMENSIONS	245 mm (9.6 inches)
CURB WEIGHT (INCLUDING FLUIDS)	192.8 kg (425.0 pounds)

DIMENSIONS

FRAME TYPE	Diamond
SEAT DETAILS	-
WHEELBASE	1,440 mm (56.7 inches)
LENGTH	2,075 mm (81.7 inches)
WIDTH	815 mm (32.1 inches)
HEIGHT	1,135 mm (44.7 inches)
SEAT HEIGHT	815 mm (32.1 inches) If adjustable, lowest setting.
GROUND CLEARANCE	135 mm (5.3 inches)
TRAIL SIZE	103 mm (4.1 inches)
WHEELS DETAILS	10-spoke alloy wheels

XR9

PRICE LIST

XR9 STAGE

XR9 KIT		
PART NO.	DESCRIPTION	RETAIL PRICE
A10601-01	Tank cover plus intakes (carbon fiber)	1050 €
A10602-01	Front plate assy	600 €
A10603-01	Radiator covers (includes headlights and wings)	1425 €
A10605-01	Seat assy (includes saddle, salad box, lights)	1900 €
TOTAL		4975 €

XR9 KIT OPTIONS		
PART NO.	DESCRIPTION	RETAIL PRICE
A10505-01	Paintjob	1200 €
A10507-01	Fork protectors with carbon fiber fender	450 €
A11001-01	Bottpower sprocket cover	120 €
A11000-02	License plate holder	390 €
A11002-01	Bottpower TA-KE composite handlebar	550 €
C10068	Akrapovic exhaust	775 €
C10069	ECU flashing	350 €

*The above prices do not include VAT

XR9 TOP LEVEL OPTIONS		
PART NO.	DESCRIPTION	RETAIL PRICE
A10501-01	Bottpower triple clamp	1200 €
C10070	Yamaha R1 fork	1880 €
C10071	Ceracarbon fork	10000 €
C10072	Ohlins shock	1181 €
C10073	Yamaha R1 front calipers	936 €
C10074	Brembo brake calipers (black)	1347 €
C10075	Yamaha R1 front discs	320 €
C10076	Brembo brake discs	588 €
C10077	Front wheel axle	480 €
C10078	Rotobox carbon fiber wheels	3000 €

XR9

FAQ

FAQ

How long does it take to transform a bike with your kit?

An experienced assembler can do it in around 4 hours (disassembly of the original Yamaha parts + assembly the XR9 kit). A dummy may do it in around 8h easily.

I am a dummy and I do not know how to use a screwdriver... do you guys have a solution for me?

Either Bottpower Factory or our official dealer's network can assemble the kits for you. You just need to ask for prices and the closest dealer from your home in your country. Bottpower dealers guarantee you the highest quality of service.

Will the bike be street legal?

Because it is not necessary to modify the frame, the bike keeps its original papers. The headlights and tail lights provided with the kit are CE approved. If in your country there is a periodic technical inspection, you will need to update your vehicle documentation to include these changes. The procedure to do it is different in each country, but in general it is not a complicated or expensive process.

If I order a kit, how long is the delivery time?

At the moment (December 2020) our delivery time for a complete kit is 8 weeks upon purchase receipt.

Do you sell complete bikes?

Yes, we will be very happy to build a complete bike for you, customized at your own taste.

Can I choose the bike color / paint scheme?

We provide different options in our online configurator, but if you want something different, we will listen to your ideas and we will provide you a quote. We will work with you to define your idea.

What donor bikes are suitable for the XR9 kit?

The kit fits perfectly on the Yamaha XSR 900.

It also fits on the Yamaha MT09, by the moment only in the models 2017 onwards. We are working to adapt the kit to those MT models previous to 2017.

In order to make the XR9 kit to fit on an MT09, it is necessary to use an XSR900 fuel tank. That's why the price of the kit is a little bit more expensive if your donor bike is an MT09 because we include an XSR900 fuel tank into the kit.

Can I ask you guys to add some extra parts and accessories to my "standard kit"?

Of course, you can ask for prices and availability of parts and accessories. We do have a long list of different suppliers which can provide us with your desired item or gadget.

Can I buy the kit from YAMAHA OFFICIAL dealers?

Yes, you can do it. Ask your Yamaha dealer about the kit. Anyway, there is no particular agreement with Yamaha official dealers so we suggest you to buy from Bottpower site and / or Bottpower dealer's network.

Can I see a demo bike in my country before I buy it?

Yes, our official dealers have one demo unit to show you. Please ask us for the closest dealer in your area and we will share all details with you (in some countries this may not be a possibility yet)

Do the prices on your website include VAT?

No, our prices are VAT excl. If you are not a business and you live in Europe, then 21% VAT will be added to the final invoice.

How long is the warranty period for Bottpower products?

As per European Law, 2 years warranty apply for all Bottpower parts

How can I proceed with warranties?

Please contact your sales representative you bought the part from (either Bottpower Dealer or Bottpower Factory) and explain to them your claim.

info@bottpower.com / (+34) 649 307 865



www.bottpower.com